

# Chapter 14

## The Effect of Restoration Measures on the Benthic Invertebrates of a Danube Backwater (Alte Donau)

Berthold Janeček, Patrick Leitner, Otto Moog, and Katrin Teubner

**Abstract** Benthic invertebrates were used as bioindicators to document the effect of restoration measures in the backwater Alte Donau in Vienna, a former side-arm of the Danube. The study covers four periods of lake management: (1): the mesotrophic year before eutrophication (1987), (2): the 2 years of chemical iron chloride treatment aimed at the phosphate precipitation in the water column and the oxidation of nitrate-treated sediment surface layers (1995–1996), (3): further 3 years of other lake management measures during the restoration period (1995–1999), and (4): an early stage of the re-establishment of underwater vegetation (2000, 2003). Over eight survey years from 1987 to 2003, about 330 benthic invertebrate taxa with three most abundant systematic groups were identified: 37 species of oligochaetes, 23 species of molluscs (18 gastropods and 5 bivalves), and 190 species of the chironomids and other dipterans. The trophic classification index that refers to a habitat quality score by chironomids indicates the year 1987 as mesotrophic (3.46, the index range for mesotrophic conditions is 2.50–3.49). In this year the chironomids and oligochaet species inhabited a variety of diverse habitats ranging from soft sediments (clay and mud), sand, gravel, pebbles and stones to dense stands of macrophytes. The biomonitoring record of 15 mollusc species was significantly higher in this mesotrophic reference year than in any other following survey year. The trophic classification index denotes 1995 as the most eutrophied year. With the restoration and the re-establishment of macrophytes the values of this index decreased but remained higher than during the mesotrophic condition. In the years 1995 and 1996, when the chemical treatment with iron chloride, slaked lime and calcium nitrate was applied and the macrophytes were rare, the biomass of chironomids and oligochaets

---

B. Janeček · P. Leitner · O. Moog

Department of Water, Atmosphere and Environment, Institute of Hydrobiology and Aquatic Ecosystem Management, University of Natural Resources and Life Sciences, Vienna, Austria  
e-mail: [berthold.janecek@boku.ac.at](mailto:berthold.janecek@boku.ac.at); [patrick.leitner@boku.ac.at](mailto:patrick.leitner@boku.ac.at); [otto.moog@boku.ac.at](mailto:otto.moog@boku.ac.at)

K. Teubner (✉)

Department of Limnology & Biological Oceanography, Faculty of Life Sciences, University of Vienna, Vienna, Austria  
e-mail: [katrin.teubner@univie.ac.at](mailto:katrin.teubner@univie.ac.at)

29 was particularly low. Among the three important taxonomic groups, i.e. the chirono-  
30 mids, bivalves, and oligochaets, only the first two groups achieved relative biomass  
31 dominance. The relative importance of chironomids over oligochaets during these  
32 both years of the Riplox-treatment might rather mirror the losses of oligochaets  
33 being affected by nitrate exposure than the re-colonization by 'new' chironomid  
34 species in the sediment. In addition, in particular active filter feeders such as bivalves  
35 seemed to adjust well to the muddy sediment environment after chemical treatment.  
36 In the following years of the restoration and the early stage of macrophyte re-  
37 establishment, oligochaets and bivalves became the dominant groups mainly con-  
38 tributing to the macrozoobenthic biomass, while the biomass of chironomids  
39 remained relatively low. Different from the indication by enhanced water transpar-  
40 ency and low phytoplankton biomass achieved by restoration measures in 2004, the  
41 shift towards a mesotrophic environment seemed to be retarded when assessing Alte  
42 Donau by the chironomid habitat quality score index. The main reason why the  
43 chironomid assemblage did not follow the other indicators of mesotrophic condi-  
44 tions in 2004 can be seen in the disruption of the sediment (e.g. by sedimentation of  
45 precipitation chemicals) and associated loss of underwater habitat structure due to  
46 still relatively low macrophyte biomass during the last invertebrate survey. The phy-  
47 tophilic chironomid species still had a low abundance when only about 50% of the  
48 macrophyte biomass was recorded if compared with the mesotrophic situation in  
49 1987. Despite the wax and wane of benthic invertebrates described during the eight-  
50 year survey, invertebrate biomass is relatively high in the long-term average and  
51 thus characterises Alte Donau as a lowland environment along habitats from low- to  
52 high altitudes.

53 **Keywords** Oxbow lake · Benthic fauna · Bio-indicator · Chironomids · Pupal  
54 exuviae of chironomids · Bivalves · Oligochaets · Re-colonization of sediment ·  
55 Lake restoration · Phosphate precipitation · Riplox

## 56 14.1 Introduction

57 Benthic invertebrates are a diverse group, containing a large number of species of  
58 various systematic origins, widely used as bioindicators (Rosenberg and Resh 1993;  
59 Woolsey et al. 2007; Moog et al. 2018). They are important consumers for accelerat-  
60 ing the turnover of autochthonous and allochthonous organic matter in aquatic sys-  
61 tems and serve as substantial food source for fish (Merritt and Cummins 1996;  
62 Moog 2002; Jungwirth et al. 2003; Moog and Hartmann 2017). They are living on  
63 the sediment surface, in the interstices and also colonize underwater vegetation  
64 from littoral to deeper profundal zones in a lake. The survey of invertebrates in Alte  
65 Donau was carried out sporadically in years of varying trophic states and restoration

measures and thus differs logistically from those of planktic community of bacteria, algae, ciliates and other animals described in Chaps. 9, 11, 12, and 13. Nevertheless, the macrozoobenthos surveys in Alte Donau have the advantage of being consistently studied by the same person (B. Janeček) when considering the species determination for 8 years over a whole period from 1997 to 2003.

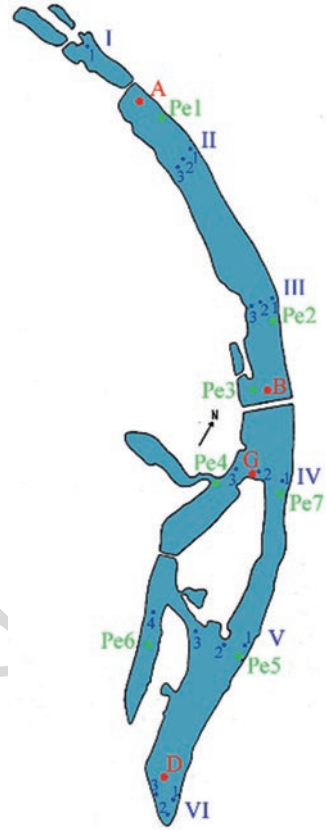
The benthic invertebrates in Alte Donau have been described for year 1987 before the eutrophication and various periods of the restoration measures. The main aim of this chapter is to characterise the benthic invertebrate community for these different periods (the description of the four basic periods of restoration measures are described in Chaps. 5 and 6). Beside the species description, a trophic index (Fittkau 1992; Orendt 1993) is used to assess the water quality before eutrophication and along years of restoration. Other results derived from the pre-dominance pattern of individual groups within the benthic community and from shifts in the similarity of the community structure by multivariate ordination plots are used to identify the main macrozoobenthic development. Among the benthic community a strong focus is given on the chironomids because this taxonomic group represented the highest species diversity throughout the 8-year benthic community survey in Alte Donau. Chironomids are commonly used for assessing this type of freshwaters (e.g., Wolfram 1996; Moog and Chovanec 2000).

## 14.2 Methods and Description of the Investigation Area

The oxbow lake Alte Donau in Vienna, a former side arm of Danube River was cut off from the main river for more than 160 years (Dokulil et al. 2010). With the regulation of the Danube River 1870–1875 (Chap. 2), a new river bed was built for navigation (New Danube), while the former stretch of the Danube River was named Alte Donau. Alte Donau thus became a groundwater-seepage lake, which was used for boating, fishery, and poultry farming (goose husbandry). This oxbow lake has also a long tradition as a popular recreational area (Chaps. 2 and 19).

Macrozoobenthos biomonitoring surveys were carried out about two times a year from 1995 onward in Alte Donau. The peak season for sampling was autumn, followed by summer contributing about 40% and 30% to the data set, respectively. Taking into account the spatial heterogeneity along the elongated shape of Alte Donau, in total more than 25 sampling sites were surveyed (Fig. 14.1), which included four sites for the bottom samples and seven sampling sites for chironomid pupal exuviae. Lake bottom samples were taken by scuba diving using a hand net (625 cm<sup>2</sup> area, 100 μm mesh size) or with a PVC-corer (27 cm<sup>2</sup> area). Pupal exuviae of chironomids were sampled by sweeping the surface with a pond-net. The samples were stored in plastic bottles and preserved with 4% formaldehyde.

**Fig. 14.1** Sampling sites. Transects of bottom samples taken in 1987 are marked by I–VI. Bottom samples at sites A and D were taken from 1995 to 2003, at B in 1995 and at G in 1999, pupal exuviae at Pe1 to Pe5 in 1996, 1997 to 2000 and 2003, at Pe6 in 2000 and 2003, and at Pe7 in August 1997 and September 1997



#### 103 **14.2.1 Species Identification and Determination** 104 **of the Biomass**

105 The separation of benthic invertebrate specimens was done by hand-picking, for  
106 some samples warm sucrose solution (30 °C, conc. c. 1.13 g per ml H<sub>2</sub>O) was used  
107 to separate the invertebrates from the remaining sample (Kajak et al. 1968).

108 All larger animals with a length of up to 2–3 mm were collected and separately  
109 labelled according to major taxonomic affiliations. A fraction of smaller animals  
110 was obtained by sub-sampling (volumetric method) to reduce the effort required for  
111 sorting and identification. For calculating the biomass of the benthic invertebrates,  
112 the weight was measured using a precision balance (accuracy of 1 per 10.000 g).  
113 The conversion of fresh weight into ash free dry weight and caloric equivalent is  
114 described in Janeček (1985, 1995).

115 After taxonomic identification, the specimens have been preserved in 80% etha-  
116 nol. Many chironomids and especially a lot of their pupal skins have been processed  
117 to permanent slides embedded in Euparal. For the identification of chironomids, a  
118 microscope with a magnification of at least 400x (for some details 1000x with oil

immersion) was most appropriate. Some common macrozoobenthos species are shown by photographs in Fig. 14.2.

### 14.2.2 Graphical Display and Statistical Methods

The snapshot sampling of macrozoobenthos from 1987 to 2003 did not rely on a regular sampling frequency but took advantage of presenting a synoptic measure of species distributions and environmental situations over a long-time perspective in Alte Donau. Data were graphically and statistically treated by distribution free methods, taking into account the sporadic sampling in space and time for the benthic invertebrates described before (see non-parametric tests that are statistically satisfying large data sets by snap shot sampling in ecology in Krienitz et al. 2016).

For the graphical display of the main biomass pattern among the dominant invertebrate groups along the large range of biomass (1.13–2789 g fw m<sup>-2</sup>), we reduced the information of metric invertebrate biomass to a binary set of presence and absence data (Fig. 14.3). We separated the invertebrates in oligochaetes, bivalves and chironomids, which refer to the most species-rich or most persistent invertebrate groups, and in the remaining invertebrates (see species and taxonomic affiliations in Table 14.1). In addition, the predominant invertebrates among these groups for each sample were identified (the predominance of an invertebrate group is defined by contributing a higher biomass to the total biomass of macrozoobenthos than individually other groups, compare with the method of Krienitz et al. 2016). The original data averaged for each year are shown for chironomids and oligochaets in Fig. 14.4.

The trophic chironomid index (Fig. 14.5, see further method description below) was depicted as box-whisker plots using SigmaPlot 10 (SPSS Inc., Chicago, USA). The line inside the box indicates the median, both ends of the box the 25th and 75th percentile, and the error bars the 10th and 90th percentile.

Multivariate analysis was used to determine whether the sampling sites were placed into specific groups that will minimize variance within groups and maximize variance among chironomid groups. We applied NMS (Non-metric Multidimensional Scaling) as an ordination technique that seeks to explain the variation in species community data using as few dimensions as possible (Kruskal 1964). NMS was analysed based on log (x + 1) transformed benthic invertebrate data using PC-ORD version 5. In this analysis sites with similar taxa composition are plotted close to each other in the scatter plot while dissimilar sites are plotted far from each other (Fig. 14.6). The following parameters were used in NMS ordinations: distance measure = Sorenson Bray-Curtis; starting configuration = random; runs with real data = 50; step-down in dimensionality from 6 dimensions to 1 dimension; initial step length = .2; maximum number of iterations per run = 400; stability criterion = .00001; iterations to evaluate stability = 10; Monte Carlo (randomized data) runs = 50.

### 159 **14.2.3 Trophic Classification Index**

160 In addition to abundance and biomass data of invertebrates described in the method  
 161 before, also habitat quality scores were applied to track the long-term habitat  
 162 changes in Alte Donau. Such scores are retrieved from a meta-analysis of empirical  
 163 observations of biotic community structure or other phenomena discovered across  
 164 individual habitats (Karr 1991; Hofmann 1994; Brettum 1989; Moog and Chovanec  
 165 2000; Moog 2002; Henderson 2003; Blenckner et al. 2007; Moog and Hartmann  
 166 2017). Habitat scores are applied to infer an ecologically sound integrity of aquatic  
 167 habitats without referring to the individual data again. The trophic classification  
 168 index suggested by Fittkau (1992) and Orendt (1993) was applied because in Alte  
 169 Donau (1) the chironomids were a representative and species-rich group among the  
 170 invertebrates (Table 14.1), and (2) the habitat change of Alte Donau was mainly due  
 171 to nutrient enrichment and subsequent nutrient reduction passing restoration mea-  
 172 sures (Chaps. 5 and 6). This habitat quality score refers to those chironomid species  
 173 that are most frequently contributing to the chironomid community within a narrow  
 174 trophic range. Empirical regressions described in detail in, e.g., Orendt (1993) pro-  
 175 vide evidence that the population density of many chironomid species responds  
 176 significantly to the total concentration of phosphorus, i.e. to the total pool of the  
 177 nutrient element which is primarily understood to control the bottom up growth in  
 178 freshwaters. The chironomid trophic index displayed in Fig. 14.5 covers many spe-  
 179 cies, and thus is a community metric mirroring the habitat conditions along the  
 180 phosphorus gradient and associated effects. The index consists of five ranks and  
 181 indicates the trophicity as follows:

182	1.00–1.99	oligotrophic
183	2.00–2.49	oligo- to mesotrophic
184	2.50–3.49	mesotrophic
185	3.50–3.99	meso- to eutrophic (in some lists up to 4.49)
186	4.00–5.00	eutrophic

## 183 **14.3 Results**

### 184 **14.3.1 Benthic Macroinvertebrate Species Inventory of Alte** 185 **Donau**

186 A total number of 330 benthic invertebrate taxa were identified during the extended  
 187 invertebrate surveys over 8 years from 1987 to 2003 (Table 14.1). The oligo-  
 188 chaetes (37 species), the molluscs (18 species of gastropods and 5 bivalves), and  
 189 the chironomids together with other Diptera (190 species) were the three main  
 190 groups of benthic invertebrates (Tables 14.1 and 14.2). Specimens from these

**Table 14.1** Macrozoobenthic taxa found in Alte Donau from 1987 to 2003

	TAXONOMIC AFFILIATION	TAXON
t1.1		
t1.2		
t1.3	CNIDARIA:	<i>Hydra</i> sp. WARINGER in LÖFFLER, ed.,
t1.4		<i>Pelmatohydra oligactis</i> PALLAS; <i>Craspedacusta sowerbii</i> LANKESTER
t1.5	TURBELLARIA:	<i>Dendrocoelum lacteum</i> O.F. MÜLLER, <i>Dugesia tigrina</i> GIRARD
t1.6	NEMATODA:	<i>Nematoda</i> Gen. sp.
t1.7	GASTROPODA:	<i>Acroloxus lacustris</i> LINNAEUS, <i>Bithynia tentaculata</i> LINNAEUS, <i>Potamopyrgus antipodarum</i> GRAY, <i>Galba truncatula</i> O.F. MÜLLER,
t1.8		<i>Radix auricularia</i> LINNAEUS, <i>R. ovata</i> DRAPARNAUD,
t1.9		<i>Physella acuta</i> DRAPARNAUD, <i>P. heterostropha</i> SAY,
t1.10		<i>Gyraulus albus</i> O.F. MÜLLER, <i>G. crista</i> L., <i>G. sp.</i> , <i>Planorbis planorbis</i> L., <i>Hippeutis complanatus</i> LINNAEUS, <i>Valvata cristata</i> O.F. MÜLLER,
t1.11		<i>V. piscinalis</i> O.F. MÜLLER, <i>V. studeri</i> BOETERS & FALKNER,
t1.12		<i>Viviparus acerosus</i> Bourguignat, <i>V. contectus</i> Millet
t1.13	BIVALVIA:	<i>Dreissena polymorpha</i> PALLAS, <i>Casertiana ritida</i> JENYNS,
t1.14		<i>Anodonta anatina</i> LINNAEUS, <i>A. cygnea</i> LINNAEUS,
t1.15		<i>Unio pictorum latirostris</i> KÜSTER
t1.16	OLIGOCHAETA:	<i>Aeolosoma</i> sp., <i>Criodrilus lacuum</i> HOFFMEISTER,
t1.17		<i>Eiseniella tetraedra</i> SAVIGNY, <i>Stygodrilus heringianus</i> CLAPAREDE, <i>Amphichaeta leydigii</i> TAUBER, <i>Chaetogaster diaphanus</i> GRUTHUISEN,
t1.18		<i>Dero digitata</i> MÜLLER, <i>D. obtusa</i> D'UDEKEM, <i>D. sp.</i> ,
t1.19		<i>Nais christinae</i> KASPRZAK, <i>N. communis</i> PIGUET,
t1.20		<i>N. pseudobutusa</i> PIGUET, <i>N. elinguis</i> MÜLLER, <i>N. simplex</i> PIGUET, <i>N. sp.</i> , <i>Ophidonais serpentina</i> MÜLLER, <i>Pristina longiseta</i> EHRENBURG,
t1.21		<i>Slavina appendiculata</i> D'UDEKEM, <i>Specaria josinae</i> VEJDovsky,
t1.22		<i>Stylaria lacustris</i> LINNAEUS, <i>Vejdovskyella comata</i> VEJDovsky,
t1.23		<i>V. intermedia</i> BRETSCHER, <i>Propappus volki</i> MICHAELSEN,
t1.24		<i>Aulodrilus japonicus</i> YAMAGUCHI, <i>Branchiura sowerbyi</i> BEDDARD, <i>Ilyodrilus templetoni</i> SOUTHERN, <i>Limnodrilus claparedianus</i> RATZEL, <i>L. hoffmeisteri</i> CLAPAREDE, <i>L. profundicola</i> VERILL, <i>L. sp.</i> ,
t1.25		<i>Potamothrix bavaricus</i> ÖSCHMANN, <i>P. hammoniensis</i> MICHAELSEN,
t1.26		<i>P. moldaviensis</i> VEJD. & MRÁZEK, <i>Psammoryctides barbatus</i> GRUBE, <i>P. moravicus</i> HRABE, <i>P. sp.</i> ,
t1.27		<i>Tubifex</i> cf. <i>ignotus</i> STOLC, <i>Tubifex tubifex</i> MÜLL.
t1.28		
t1.29	HIRUDINEA:	<i>Dina punctata</i> JOHANNSSON, <i>Erpobdella octocutata</i> LINNAEUS,
t1.30		<i>Alboglossiphonia hyalina</i> MÜLLER, <i>Helobdella stagnalis</i> LINNAEUS

(continued)

**Table 14.1** (continued)

	TAXONOMIC AFFILIATION	TAXON
t1.31	CRUSTACEA - MYSIDACEA:	<i>Limnopsis benedeni</i> CZERNIAWSKI
t1.32	CRUSTACEA - AMPHIPODA:	<i>Chelicorophium curvispinum</i> SARS,
t1.33		<i>Dikerogammarus haemobaphes</i> EICHWALD, <i>D.</i> sp.,
t1.34		<i>Echinogammarus ischnus</i> BEHNING, <i>Gammarus roeselii</i> GERVAIS,
t1.35	CRUSTACEA - ISOPODA:	<i>Asellus aquaticus</i> LINNAEUS
t1.36	ARACHNIDA-ACARINA:	<i>Hydrozetes lacustris</i> MICHAEL, <i>Trimalaconothrus novus</i> SELL.,
t1.37		<i>Hydrodroma despicitens</i> O.F. MÜLLER, <i>Leberitia</i> sp.,
t1.38		<i>Frontipoda musculus</i> O.F. MÜLLER, <i>Limnesia undulata</i> O.F. MÜLLER,
t1.39		<i>Hygrobates longipalpis</i> HERMANN; <i>Unionicola aculeata</i> KOENIKE,
t1.40		<i>U. crassipes</i> O.F. MÜLLER, <i>Neumania deltooides</i> PERSIG,
t1.41		<i>Piona discrepans</i> KOENIKE, <i>P. pusilla</i> NEUMAN,
t1.42		<i>P. pusilla rotundoides</i> THOR, <i>Hydrochoreutes krameri</i> PERSIG,
t1.43		<i>Forelia curvipalpis</i> VIETS, <i>Axonopsis complanata</i> O.F. MÜLLER, <i>Brachypoda versicolor</i> O.F. MÜLLER, <i>Mideopsis orbicularis</i> O.F. MÜLLER,
t1.44		<i>Arrenurus</i> sp., <i>Porolohmanella violacea</i> KRÄMER
t1.45	EPHEMEROPTERA	<i>Coenis horaria</i> L., <i>C. lactea</i> BURMEISTER,
t1.46		<i>C. luctuosa</i> BURMEISTER, <i>C. luctuosalmacura</i> ,
t1.47		<i>C. rivulorum</i> EATON, <i>C.</i> sp., <i>Cloeon dipterum</i> L., <i>Ephemerella</i> sp.,
t1.48		<i>Ephemera danica</i> MÜLLER, <i>E. vulgata</i> LINNAEUS, <i>E.</i> sp.
t1.49	ODONATA:	<i>Coenagrion puella</i> LINNAEUS, <i>Erythronna najas</i> HANSEMANN, <i>Isonura elegans</i> Van der LINDEN <i>Platycnemis pennipes</i> PALLAS, <i>Orthetrum</i>
t1.50		sp.
t1.51	PLECOPTERA:	<i>Nemoura</i> sp.
t1.52	HETEROPTERA:	<i>Gerris</i> sp., <i>Ilyocoris cimicoides</i> LINNAEUS
t1.53	PLANIPENNIA:	<i>Sisyra</i> sp.
t1.54	COLEOPTERA:	<i>Haliplus</i> sp., <i>Oulimnius tuberculatus</i> MÜLLER, <i>Donacia</i> sp.
t1.55	TRICHOPTERA:	<i>Ecnomus tenellus</i> RAMBUR, <i>Hydropsyche contubernalis</i> McLACHLAN, <i>Orthotrichia costalis</i> CURTIS, <i>Oxyethira flavicornis</i> PITET, <i>O.</i> sp.,
t1.56		<i>Athripsodes cinereus</i> CURTIS, <i>Athripsodes</i> juv.,
t1.57		<i>Ceraclea dissimilis</i> STEPHENS, <i>Leptocerus tineiformis</i> CURTIS, <i>Mystacides azurea</i> LINNAEUS, <i>Mystacides longicornis</i> LINNAEUS,
t1.58		<i>M.</i> sp., <i>Oecetis lacustris</i> PICTET, <i>Oecetis ochracea</i> CURTIS, <i>O.</i> sp., <i>Psychomyia pusilla</i> FABRICIUS, <i>Tinodes waeneri</i> LINNAEUS



	DIPTERA:	
t1.59		<i>Bezzia</i> sp., <i>Monohelea</i> sp., <i>Chaoborus flavicans</i> MEIGEN, C. Sp.,
t1.60		<i>Ablabesmyia longistyla</i> FITTKAU, A. monilis LINNAEUS,
t1.61		A. cf. <i>montilis</i> LINNAEUS, <i>Acricotopus lucens</i> ZETTERSTEDT,
t1.62		<i>Brillia bifida</i> KIEFFER, <i>Bryophaenocladus</i> cf. <i>nidorum</i> EDWARDS, B. sp., <i>Chironomus acutiventris/obtusidens</i> , C. cf. <i>annularius</i> nec DE GEER,
t1.63		C. <i>balatonicus</i> DÉVAL W. & S., C. <i>balatonicus/plumosus</i> ,
t1.64		C. <i>longipes</i> STAEGER, C. <i>longistylus</i> GOETGHEBUER,
t1.65		C. <i>luridus</i> STRENZKE, C. <i>nudiventris</i> RYSER S. & W., C. <i>nuditarsis</i> KEYL, C. <i>plumosus</i> LINNAEUS, C. <i>plumosus</i> , C. <i>pseudothummi</i> STRENZKE,
t1.66		C. sp., <i>Cladopelma bicarinata</i> BRUNDIN, C. <i>goetghebueri</i> ,
t1.67		C. <i>virescens</i> MEIGEN, C. <i>viridula</i> LINNAEUS, C. sp.,
t1.68		<i>Cladotanytarsus atridorsum</i> KIEFFER, C. <i>lepidocalcar</i> KRÜGER,
t1.69		C. <i>mancus</i> WALKER, C. <i>mancus</i> , C. <i>nigrovittatus</i> GOETGHEBUER,
t1.70		C. <i>vandervulpi</i> EDWARDS, C. <i>wexionensis</i> BRUNDIN, C. sp., <i>Corynoneura arctica</i> KIEFFER, C. <i>carriana</i> EDWARDS,
t1.71		C. <i>coronata</i> EDWARDS, C. <i>grattias</i> SCHLEE, C. <i>scutellata</i> WINNERTZ, C. sp., <i>Cricotopus albiforceps</i> KIEFFER, C. cf. <i>arcuatus</i> HIRVENOJA,
t1.72		C. <i>bicinctus</i> MEIGEN, C. <i>cylindraceus</i> KIEFFER, C. <i>festivellus</i> KIEFFER,
t1.73		C. <i>flavocinctus</i> KIEFFER, C. <i>fuscus</i> KIEFFER, C. <i>intersectus</i> STAEGER, C. cf. <i>laricomalis</i> , C. <i>pilitarsis</i> ZETTERSTEDT, C. <i>reversus</i> HIRVENOJA,
t1.74		C. <i>ricotopus</i> FABRICIUS, C. <i>sylvestris</i> , C. <i>trifasciatus</i> MEIGEN,
t1.75		C. sp., <i>Cryptochironomus albofasciatus</i> STAEGER, C. <i>obreptans</i> WALKER, C. <i>psittacinus</i> MEIGEN, C. <i>supplicans</i> MEIGEN, C. sp., <i>Cryptotendipes</i>
t1.76		<i>holsattus</i> LENZ, C. <i>nyptotendipes</i> <i>usmaensis</i> PAGAST,
t1.77		C. sp., <i>Demicryptochironomus vulneratus</i> ZETTERSTEDT,
t1.78		<i>Dicrotendipes lobiger</i> KIEFFER, <i>D. nervosus</i> STÆGER,
t1.79		<i>D. notatus</i> MEIGEN, <i>D. pulsus</i> WALKER, <i>D. rritomus</i> KIEFFER, <i>D. sp.</i> , <i>Einfeldia pagana</i> MEIGEN, <i>Endochironomus albipennis</i> MEIGEN,
t1.80		<i>Glyptotendipes manciuanus</i> EDWARDS, <i>G. lyptotendipes glaucus/pallens</i> , <i>G. pallens</i> MEIGEN, <i>G. paripes</i> EDWARDS, <i>G. signatus</i> KIEFFER,
t1.81		<i>G. viridis</i> MACQUART, <i>G. sp.</i> , <i>Hamischia curtilamellata</i> MALLLOCH, <i>H. arnischia fuscimana</i> KIEFFER, <i>H. sp.</i> ,

(continued)

Table 14.1 (continued)

	TAXONOMIC AFFILIATION	TAXON
t1.82		<i>Heterotrissocladius marcidus</i> WALKER, <i>Hydrobaenus lugubris</i> FRIES, <i>Kiefferulus tendipediformis</i> GOETGHEBUER,
t1.83		<i>Labrundinia longipalpis</i> GOETGHEBUER,
t1.84		<i>Limnophyes minimus</i> MEIGEN, L. sp., <i>Microchironomus tener</i> KIEFFER, <i>Microtendipes britteni</i> EDWARDS, <i>M. brittteni/confinis</i> ,
t1.85		<i>M. chloris</i> MEIGEN, <i>M. icrotendipes pedellus</i> DE GEER,
t1.86		<i>Nanocladius balliensis</i> PALMÉN, <i>N. anocladius bicolor</i> ZETTERSTEDT, <i>N. anocladius retinervis</i> KIEFFER, <i>Nilotanytus dubius</i> MEIGEN,
t1.87		<i>Orthocladius consobrinus</i> HOLMGREN, <i>O. rthocladius fuscimanus</i> KIEFFER, <i>Parachironomus arcuatus</i> GOETGHEBUER, <i>P. biannulatus</i>
t1.88		STAEGER, <i>P. mauricii</i> KRUSEMAN, <i>P. tenuicaudatus</i> MALLOCH,
t1.89		<i>P. varus</i> GOETGHEBUER, <i>P. vitosus</i> GOETGHEBUER,
t1.90		<i>P. conversus</i> WALKER, P. sp., <i>Parakiefferiella bathophila</i> KIEFFER,
t1.91		<i>P. coronata</i> EDWARDS, P. sp., <i>Paralauterborniella nigrohaleralis</i> MALLOCH, <i>Paramerina cingulata</i> WALKER,
t1.92		<i>Paratanytarsus bituberculatus</i> EDWARDS, <i>P. dimorphis</i> REISS,
t1.93		<i>P. dissimilis</i> JOHANNSEN, <i>P. aratanytarsus inopertus</i> WALKER,
t1.94		<i>P. laetipes</i> ZETTERSTEDT, <i>P. tenellulus</i> GOETGHEBUER,
t1.95		<i>P. tenuis</i> MEIGEN, P. sp., <i>Paratendipes albimanus</i> MEIGEN,
t1.96		<i>Paratrachocladius rufiventris</i> MEIGEN, <i>Phaenopsectra</i> cf. <i>flavipes</i> MEIGEN, P. sp., <i>Polypeditum bicrenatum</i> KIEFFER, <i>P. comvictum</i> WALKER,
t1.97		<i>P. cultellatum</i> GOETGHEBUER, <i>P. nubeculosum</i> MEIGEN,
t1.98		<i>P. sordens</i> V.D. WULP, P. sp., <i>Procladius choreus</i> MEIGEN,
t1.99		<i>P. lugens</i> KIEFFER, <i>P. rufovittatus</i> V.D. WULP ( <i>Psilotanytus rufovittatus</i> ), <i>P. sagittalis</i> KIEFFER, <i>P. signatus</i> ZETTERSTEDT, P. sp., <i>Prodiamesa</i>
t1.100		<i>olthacea</i> MEIGEN, <i>Psectrocladius limbaellus</i> HOLMGREN, P. sp., <i>Psectrocladius cf. brehmi</i> KIEFFER, <i>Psectrocladius oxyura</i> LANGTON,
t1.101		<i>Psectrocladius oxyuralisordidellus</i> ,
t1.102		<i>P. psilopterus</i> KIEFFER, <i>P. sordidellus</i> ZETTERSTEDT,
t1.103		<i>P. schlienzi</i> WÜLKER, P. sp., <i>Pseudochironomus prasinatus</i> STAEGER, P. sp., <i>Schineriella schineri</i> STROBL, <i>Stempellina almi</i> BRUNDIN,
t1.104		<i>S. subglabripennis</i> BRUNDIN, <i>S. minor</i> EDWARDS,
t1.105		<i>Stenochironomus gibbus</i> FABRICIUS, <i>Stictochironomus</i> sp., <i>Synorthocladius semivirens</i> KIEFFER, <i>Tanytus kraatzii</i> KIEFFER, <i>T. punctipennis</i>
t1.106		MEIGEN, T. sp., <i>Tanytarsus bathophilus</i> KIEFFER, <i>T. chinensis</i> REISS, <i>T. ejuancidus</i> WALKER, <i>T. eminulus</i>
t1.107		WALKER, <i>T. excavatus</i> EDWARDS, <i>T. glabrescens</i> EDWARDS, <i>T. gregarius</i> KIEFFER, <i>T. heusdensis</i> GOETGHEBUER,

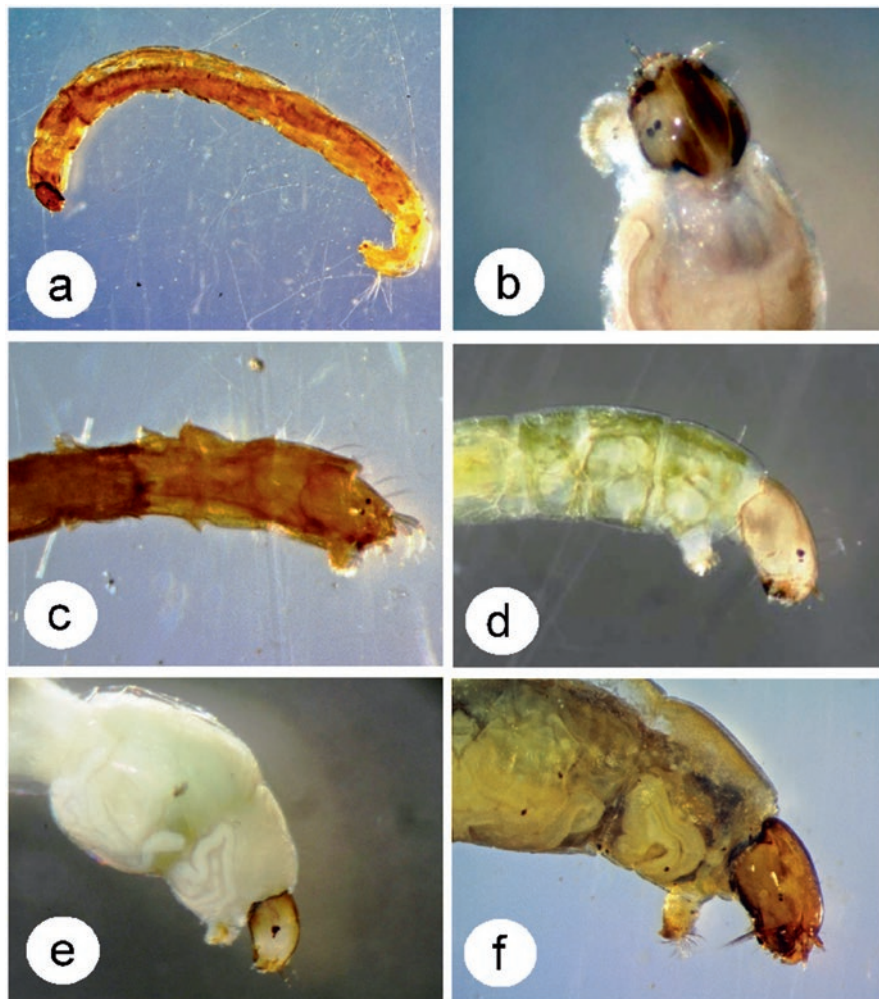
t1.108	<i>T. inaequalis</i> GOETGHEBUER, <i>T. lactescens</i> EDWARDS,
t1.109	<i>T. lestagei</i> GOETGHEBUER, <i>T. lestagei</i> -Agg. Typ 1&2,
t1.110	<i>T. cf. longitarsis</i> KIEFFER, <i>T. mancospinosus</i> EKREM & REISS,
t1.111	<i>T. medius</i> REISS & FITTKAU, <i>T. mendax</i> KIEFFER, <i>T. mendax/occultus</i> , <i>T. nigricollis</i> GOETGHEBUER, <i>T. nigricollis/lusmaensis</i> ,
t1.112	<i>T. occultus</i> BRUNDIN, <i>T. pallidicornis</i> WALKER, <i>T. sensu</i> Langton,
t1.113	<i>T. signatus</i> V.D. WULP, <i>T. smolandicus</i> BRUNDIN,
t1.114	<i>T. sylvaticus</i> V.D. WULP, <i>T. cf. usmaensis</i> PAGAST,
t1.115	<i>T. verralli</i> GOETGHEBUER, <i>T. spp.</i> , <i>Thienemamiella</i> sp., <i>Virgatanytarsus</i> sp. sensu Langton & Visser,
t1.116	<i>Xenochironomus xenolabis</i> KIEFFER, <i>Zavreliella marmorata</i> V.D. WULP
t1.117	Sites and sampling period see Fig. 14.1

t3.1 **Table 14.2** Number of collected species of the seven main taxonomic affiliations (n.c. not  
 t3.2 collected, \* only bottom samples). The number of chironomid species, which were newly found in  
 t3.3 Alte Donau when compared with the survey in 1987 are listed from 1995 onward (last row)

t3.4		1987	1995	1996(97)	1997 (98)	1998	1999	2000	2003
t3.5	Gastropoda	13	5	7	4	4	2	2	3
t3.6	Bivalvia	2	3	3	2	1	4	1	2
t3.7	Oligochaeta	7	13	10	16	16	21	8	14
t3.8	Crustacea – Malacostraca	n.c.	3	2	3	3	4	4	2
t3.9	Ephemeroptera	3	3	3	2	2	3	3	3
t3.10	Trichoptera	5	5	8	5	3	12	5	2
t3.11	Chironomidae	68	39*	91	77	67	114	114	90
t3.12	Chir. spp., new for AD		15	24	10	6	31	18	5

191 systematic units have been found in all years of the habitat surveys in Alte Donau.  
 192 Eighty species of other taxonomic affiliations such as Cnidaria, Turbellaria,  
 193 Nematoda, Hirundinea, Crustacea (Ostracoda), Mysidacea, Amphipoda, Isopoda,  
 194 Arachnida-Acarina, Ephemeroptera, Odonata, Plecoptera, Heteroptera,  
 195 Planipennia, Coleoptera, and Trichoptera were further recorded during this study  
 196 (Table 14.1). Comparing the chironomid species inventories of 1987 with those of  
 197 each following year, 5–24 chironomid species were found that haven't been  
 198 observed during the very detailed initial survey in the mesotrophic year 1987  
 199 (Table 14.2). The settlement of this countable number of newly observed chirono-  
 200 mid species illustrates the dynamic and also the persistence of chironomids  
 201 throughout surveys during restoration and macrophyte re-establishment in Alte  
 202 Donau.

203 The observation of these invertebrates is attributed to four periods: (1) the meso-  
 204 trophic reference condition in 1987, before the oxbow lake has undergone the  
 205 strong eutrophication in the early nineties, (2) the 2 years of chemical phosphate  
 206 precipitation (iron chloride treatment, 1995, 1996), (3) a 3 year period of further  
 207 restoration treatments (1997–1999) and (4) 2 years of the re-establishment of mac-  
 208 rophytes (2000, 2003) (more details about the periods see Chap. 6). In addition to  
 209 a description of particular species and habitat change during these lake periods,  
 210 the main pattern of invertebrate development is graphically shown in Figs. 14.3, 14.5  
 211 and 14.6.



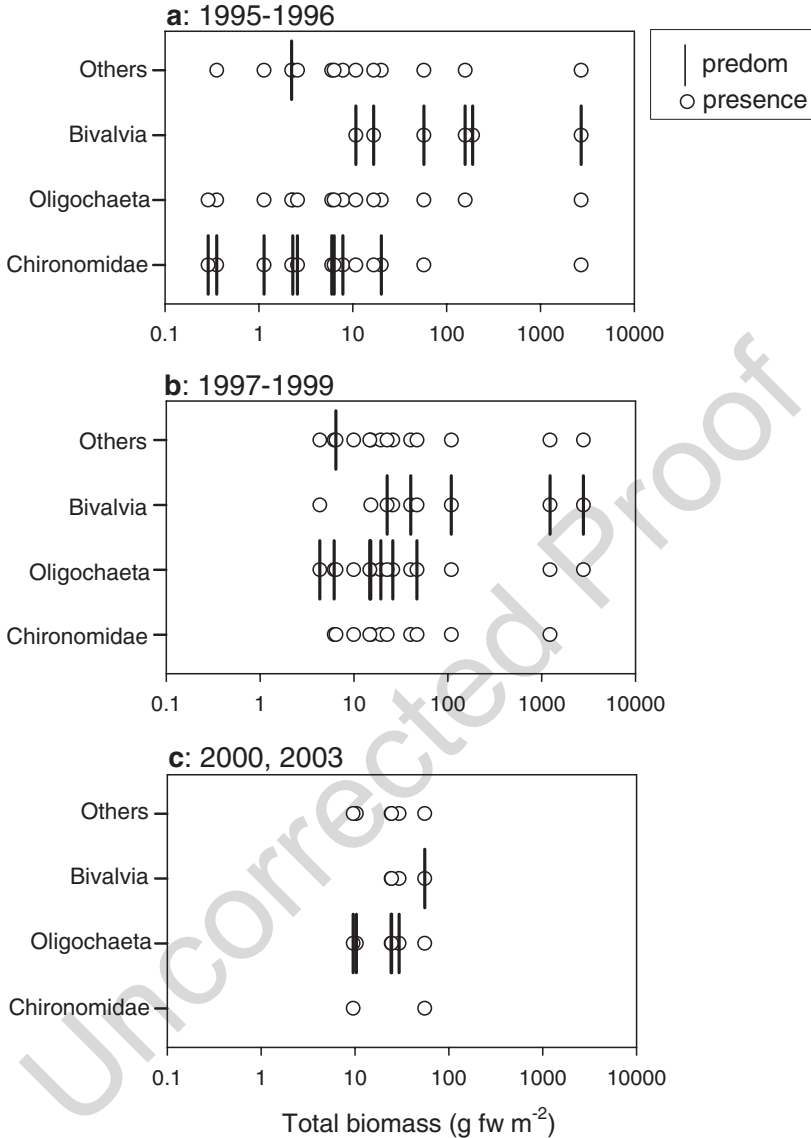
**Fig. 14.2** Chironomidae found in Alte Donau – (a) Larva of *Polypedilum* sp. (Chironominae – Tribus Chironomini), (b–f) Heads of larvae, (b): *Paratendipes* cf. *albimanus* (Chironominae – Tribus Chironomini), (c): *Virgatanytarsus* cf. *arduennensis* (Chironominae – Tribus Tanytarsini), (d): *Cricotopus sylvestris* (Orthoclaadiinae), (e): *Nanocladius rectinervis* (Orthoclaadiinae), (f): *Prodiamesa olivacea* (Prodiamesinae). (Photos a, c and f by Wolfram Graf; b, d and e by Sabine Schiffels)

### 212 14.3.2 Year 1987 – Mesotrophic Conditions

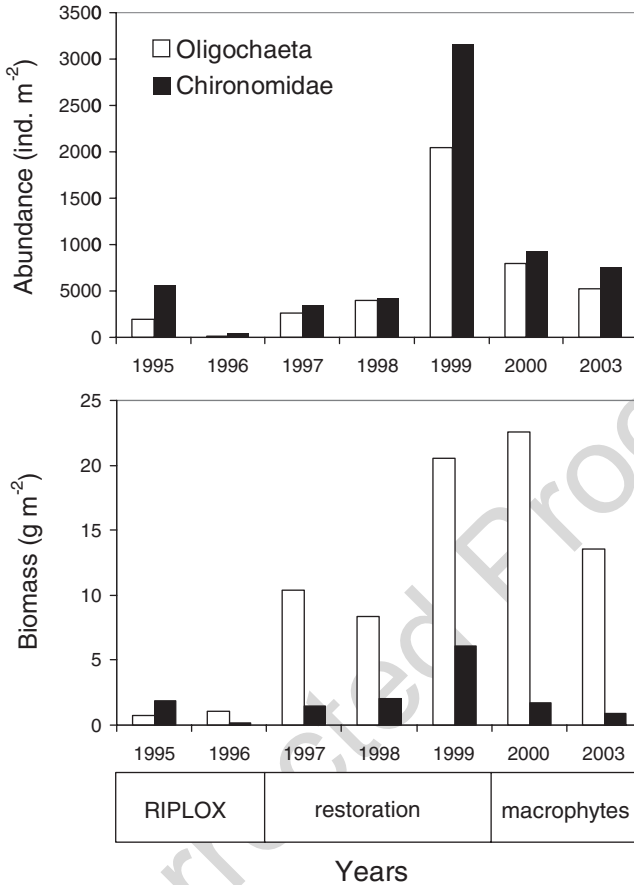
213 The survey in year 1987 characterises the period before eutrophication of Alte  
214 Donau with luxuriant stands of macrophytes, which were mainly built up by water-  
215 milfoils (*Myriophyllum* spp.) and stoneworts (charophytes, most widespread species  
216 was *Nitellopsis obtusa*) (macrophyte survey see Chap. 8). In the extended  
217 surveys in spring (April, May) and early summer (June), the Naididae, which can  
218 occur on both, the sediment and the macrophytes, dominated the Oligochaeta com-  
219 munity. The motility of these species is well recognised as they can leave the sedi-  
220 ment climbing up to higher parts of the plants when faced with oxygen deficiency  
221 near the lake bottom. *Stylaria lacustris* and *Pristina aequisetata* were the most abun-  
222 dant species of Naididae, followed by *Nais communis*, *N. elinguis* and *N. pseudob-*  
223 *tusa*. In contrast to the years after the iron chloride treatment, Tubificidae (*Tubifex*  
224 *tubifex*, *Potamothrix hamoniensis*) were rarely found in the sediments in 1987. An  
225 explanation for the lack of these Oligochaeta species under mesotrophic conditions  
226 may be the relatively coarse-grained to sandy sediments, the large fraction of coarse-  
227 textured detritus of plant material (further details see e.g., Learner et al. 1978;  
228 Schneider et al. 1988; Bauer and Waringer 1987; Hauer et al. 2018).

229 The record of 15 mollusc species (spp.) in 1987 was higher than in any of the  
230 following survey years of this study (Table 14.2) (Haberlehner 1987). In compari-  
231 son to the benthic fauna of some larger sized backwaters in the alluvial forests east  
232 and west of Vienna (e.g. floodplain of Stopfenreuth: 34 spp., Lobau floodplains: 27  
233 spp., Haberlehner 1986), however, Alte Donau serves as fragmented and modified  
234 habitat for a smaller number of species and lower animal densities (history of river  
235 cut-off Alte Donau see method and Chap. 2).

236 The Chironomidae were the third important benthic invertebrate group, with  
237 respect to abundances (individual numbers and biomass) and a large variety of species  
238 during the whole study period. In general, the chironomid communities in the  
239 fine sediment exhibited low species numbers even though high densities of 4200  
240 individuals  $m^{-2}$  were found in January (1357–12,995), 13,650 individuals  $m^{-2}$  in  
241 March (3. March: 5913–31,490 ind.  $m^{-2}$ ), 3060 individuals  $m^{-2}$  in May (27. May:  
242 1676–5579 ind.  $m^{-2}$ ) and 2810 individuals  $m^{-2}$  in June (15. June: 1410–5599 ind.  
243  $m^{-2}$ ). The biomass values ranged from 0.81 in May to 2.02 in June and thus were  
244 moderate despite the peak abundances. The comparably low total biomass of chi-  
245 ronomids was due to the small size of the abundant species, e.g., belonging to the  
246 Tanytarsini (*Tanytarsus glabrescens*, *T.* spp., *Paratanytarsus tenuis*, *P.* spp.) and  
247 Orthocladinae (*Parakiefferiella bathophila*, *Psectrocladius sordidellus*). Merely  
248 two Chironomus species (*C. plumosus*, *C. balatonicus*) were of large size and were  
249 only common at single sites. Chironomini were in general not numerous, with the  
250 exception of up to 480 individuals  $m^{-2}$  for *Chironomus plumosus* and up to 560  
251 individuals  $m^{-2}$  for *Parachironomus arcuatus* in June. Tanypodinae mainly con-  
252 sisted of *Procladius (Holotanypus)* spp. and *Tanypus punctipennis*. Only a few spe-  
253 cies have been found exclusively on sediments, for example *Cryptochironomus*  
254 spp., *Stictochironomus* spp. or *Cladotanytarsus mancus*. A larger number of species,



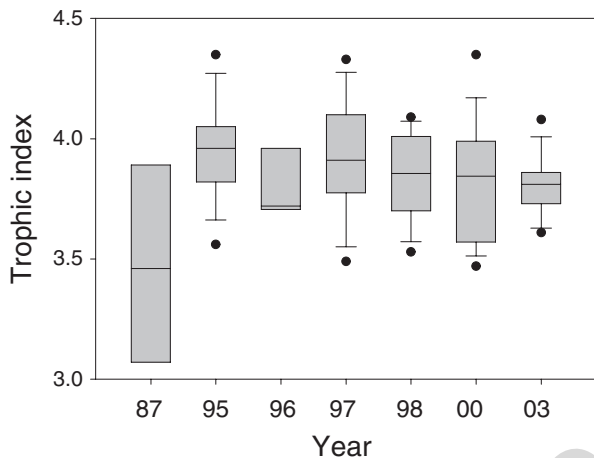
**Fig. 14.3** Presence of invertebrates displayed along the total invertebrate biomass during three periods of restoration: **(a)** – chemical phosphate precipitation by RIPLOX-method, **(b)** – further restoration measures, **(c)** – re-establishment of macrophytes ( $n = 36$ ). The composition of invertebrates is depicted by the three groups Chironomidae, Oligochaeta and Bivalvia that are mainly and most persistently contributing to the invertebrate biomass in addition to remaining invertebrates (others) (species see Table 14.1). An invertebrate group is displayed as present (dots) if the contribution to the total invertebrate biomass exceeds 5%. Note that each invertebrate sample can be represented by all four groups. A bar indicates the predominant invertebrate for each sample. Note the log-scale of the total biomass of invertebrates. Further description see methods



**Fig. 14.4** Abundance and biomass of oligochaetes and chironomids displayed as bar charts covering the main three periods of restoration as in Fig. 14.3

255 however, was found on both the macrophytes and the bottom sediments and was  
 256 thus able to use the diverse habitat structure during this mesotrophic period with  
 257 dense macrophyte stands. Members of this transition group were *Ablabesmyia*  
 258 *monilis*, *Parakiefferiella bathophila*, *Psectrocladius sordidellus*, *Dicrotendipes tri-*  
 259 *tomus* and some species of *Paratanytarsus* and *Tanytarsus* (e.g., *T. glabrescens*).  
 260 *Polypedilum nubeculosum* was found on the submerged plant species *Ceratophyllum*  
 261 *demersum* and *Myriophyllum spicatum*, and even *Chironomus plumosus* can occur  
 262 on macrophytes such as *Chara tomentosa*, *Nitella obtusa* and *Myriophyllum*  
 263 *spicatum*. The following species were collected exclusively from macrophytes  
 264 *Chara tomentosa* and *Nitella obtusa* or from periphyton: *Nanocladius bicolor*,  
 265 *Cricotopus* sp., *Dicrotendipes lobiger*, *Endochironomus albipennis*, *Parachironomus*



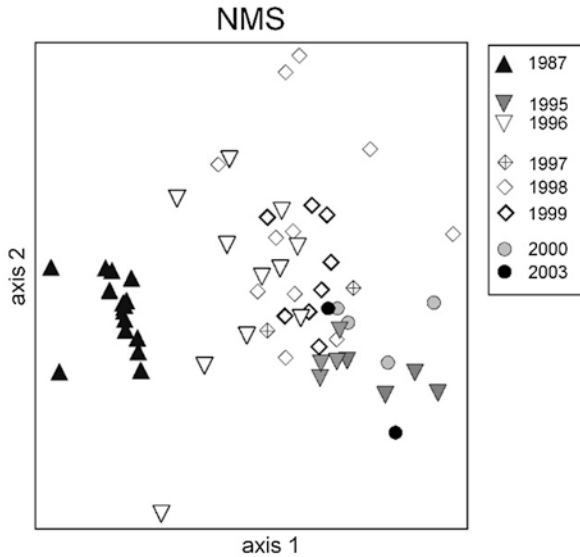


**Fig. 14.5** Chironomid assemblages used as bioindicators: Trophic index calculated from the abundance of chironomid species for individual years (1987–2003)

*tenuicaudatus* and *Glyptotendipes viridis* (mining in macrophytes *Sagittaria* and *Alisma*, see Kalugina 1975). *Glyptotendipes signatus* refers to the same habitat behaviour but is also known to settle on the bryozoans such as *Plumatella fungosa* (Janeček 2005).

The trophic indices were calculated from the pupal exuviae collections and refer three times to mesotrophic and another three times to meso-eutrophic conditions. The range of variability in the trophic index is much larger in 1987 when compared with later years (Fig. 14.5). In the following survey years mesotrophic conditions could only be identified for certain sites and only twice: site Pe3 sampled on 14.8. 1998 (value for the trophic index = 3.49) and site Pe1 on 19.8. 2000 (value for the trophic index = 3.47) (sites see Fig. 14.1).

The NMS ordination plot of scores illustrating the similarity or dissimilarity of chironomid assemblages is shown in Fig. 14.6. One symbol represents an investigation site. The benthic communities of the scores from 1987 (depicted as black triangles) are not overlapping with the scatterplots of the other years and thus confirm the unique status of chironomid community structure. They are separated most distant from those of the other years along the first NMS axis mirroring substantial differences in the community structure (Fig. 14.6). These main changes in the chironomid species composition can be well verified when going back to the original survey information. In the years after 1987 and with chemical treatment of phosphate precipitation, some of the most abundant species such as of the Tanytarsini (*Tanytarsus glabrescens*) completely disappeared.



**Fig. 14.6** Ordination scatter plot for data points that refer to the chironomid species communities in benthic samples from individual years (1987–2003)

288 **14.3.3 Years 1995 and 1996 – Chemical Treatment**  
 289 **for Phosphate Precipitation**

290 In the period of strong eutrophication of Alte Donau in 1992 and 1993, the formerly  
 291 clear-water oxbow lake turned into a turbid water body with large biomass blooms  
 292 of phytoplankton (mainly *Cylindrospermopsis raciborskii* and *Limnothrix redekei*,  
 293 see Chap. 9). The submerged water plants almost disappeared under low underwater  
 294 light availability (Chaps. 5 and 8), the annual mean Secchi depth was 0.85 and  
 295 0.89 m (shown in Fig. 11.5 in Chap. 11). The benthic invertebrate surveys for 1995  
 296 and 1996 were conducted weeks to months after the chemical precipitation treat-  
 297 ment with iron chloride (April 95 and April 96). With the deposition of sedimentary  
 298 layers rich in organic carbon (biodegraded material formed during eutrophication  
 299 together with precipitate containing phosphate, slaked lime and calcium nitrate by  
 300 chemical treatment, Ripl 1976), large areas of the sediment surface were then cover-  
 301 ed by sapropel while sandy river sediments of a grain diameter 100–250  $\mu\text{m}$   
 302 became rare (Janeček 2000). In accordance with the sparse underwater vegetation in  
 303 1995 (Fig. 8.1 in Chap. 8, 1.6 m annual mean Secchi depth in Fig. 11.5 Chap. 11),  
 304 in particular, the phytal macrozoobenthos species of the Chironomidae and  
 305 Trichoptera were rarely found. The abundance of the phytal species, however,  
 306 immediately increased again when the submerged vegetation started to recover due  
 307 to elevated water transparency in 1996 (Chap. 8, 2.1 m annual Secchi depth in Chap.  
 308 11). Particular abundant macrozoobenthic species observed in 1987, such as the

Chironomidae *Tanytarsus glabrescens*, *Paratanytarsus laetipes*, *P. tenuis*, nonetheless, could not be detected in 1995 and 1996 (Janeček 2000). In turn, many new species of oligochaets and Chironomidae were recorded in these 2 years, when compared with the macrozoobenthos survey in year 1987 (Table 14.2). 14 species of Chironomidae were identified for the first time in Alte Donau and three of them became quite frequent in the sediments: *Procladius rufovittatus* (*Psilotanypus rufovittatus*), *Stempellina subglabripennis* and *Stempellinella minor*. An even higher number of newly found species were recorded for the second year of chemical treatment (Table 14.2). Some of the newly found species in Alte Donau prefer sediments (e.g. *Cryptotendipes* sp., *Glyptotendipes paripes*, *Microtendipes* cf. *britteni*, *Polypedilum sordens* and *Tanytarsus medius*) or even live on water plants or stones (e.g. *Glyptotendipes pallens*, *G. viridis* and *Polypedilum sordens*). *Procladius rufovittatus* (*Psilotanypus rufovittatus*) is known for migration and was found in larger densities. Some species newly found in these 2 years might be called pelophilic and are more or less tolerant to oxygen deficiency. They are typical species of eutrophic waters. Large species such as *Chironomus plumosus*, *Ch. balatonicus*, *Tanytarsus punctipennis* and *T. kraatzi* could reach peak abundances of up to 520 individuals per m<sup>2</sup> and thus became dominant in terms of individual species biomass. According to the large distance of data point for 1987 and 1995 along the first NMS axis (Fig. 14.6) the species composition of the chironomids shifted largely from mesotrophic conditions to the first year of chemical treatment. Despite the high number of species observed, the abundance and biomass of chironomids and also of Oligochaets were in general low in 1995 and 1996 (Figs. 14.3a and 14.4), which can be seen as an initial negative effect of the chemical phosphate precipitation treatment. When comparing the biomass of these two macrozoobenthos groups, the chironomids became predominant against the oligochaets (Fig. 14.3a). Beside the chironomids, which were often pre-dominant when low total biomass of macrozoobenthos was found, bivalves became also often the most dominant group during both years of the chemical treatment (Fig. 14.3a) but stand for sampling dates and sites of high total biomass of macrozoobenthos. It thus seems that bivalves, as active and efficient filtrating collectors, can cope well with the chemical phosphate flocculation. In this view the two iron chloride treatments had some positive effects on Bivalvia and Chironomidae as the large number of species at low abundance increased the diversity in the macrozoobenthic community in particular for the latter. When looking at the trophic index, which is calculated from the abundance of chironomid species, the community indicated eutrophic conditions in 1995 and a meso-eutrophic environment in 1996 (Fig. 14.5).

A clearer picture of the compositional shifts in the macrozoobenthos community is recognised when assessing the functional feeding groups. In accordance with large sediment surface areas that are covered by fine particulate organic matter, detritivorous macrozoobenthos became the most important feeding group in 1995 and 1996. Filtrating collectors that are able to accumulate sinking organic particles were quite abundant too. We further found macrozoobenthic predators especially among the Chironomidae, namely Tanypodinae and *Cryptochironomus* spp. that are known to be at least partially carnivorous.

354 The compositional changes in the chironomids toward species that are primarily  
355 living in gravel and sandy sediment slightly altered the values of the trophic index  
356 (Fig. 14.5) and the overall species composition (Fig. 14.6) toward a chironomid  
357 community structure that was described under mesotrophic conditions

#### 358 **14.3.4 Years 1997–1999– Further Restoration Measures**

359 In the 3 years of the “restoration period” after chemical phosphate precipitation, the  
360 annual Secchi depth reached values from 1.7 to 2 m (Fig. 11.5 in Chap. 11). The  
361 macrophyte cover did not increase substantially and remained at moderate biomass  
362 levels comparable with the year 1997. The abundance and biomass of both the oli-  
363 gochaets and chironomids increased when compared with the 2 years of chemical  
364 phosphate precipitation (Fig. 14.4). In view of the biomass contribution of species  
365 groups allocated to large taxonomic affiliations, the macrozoobenthos community  
366 changed from the predominance of chironomids and bivalves during the chemical  
367 treatment to a community dominated by oligochaets and bivalves in subsequent  
368 years (Fig. 14.3b). From 1997 to 1999 the muddy sediment in particular at the  
369 deeper parts of the lake seemed to build up a stable environment that provides an  
370 ideal habitat for large mussels such as *Anodonta cygnea* and *Unio pictorum*. Among  
371 the chironomids a number of species such as *Parakiefferiella bathophila* and  
372 *Paratanytarsus* spp. could reach higher densities on less muddy sediments, i.e.  
373 gravel and sand. In case of oligochaets the Naididae became dominant again as  
374 commonly described for mesotrophic conditions in 1987. In 1999, the number of  
375 species and biomass of chironomids and oligochaets was highest when compared  
376 with those of the previous and the following years (Fig. 14.4). The peak abundance  
377 and biomass for four main taxonomic affiliations for individual sampling sites were  
378 36,900 individuals per m<sup>2</sup> with a corresponding biomass of 42.20 g fw per m<sup>2</sup> for the  
379 oligochaets, 81,790 individuals per m<sup>2</sup> with a corresponding biomass of 19.42 g fw  
380 per m<sup>2</sup> for the chironomids, 4200 individuals per m<sup>2</sup> with a corresponding biomass  
381 of 1.53 g fw per m<sup>2</sup> for the Ephemeroptera, and 900 individuals per m<sup>2</sup> with a cor-  
382 responding biomass of 1.75 g fw per m<sup>2</sup> for the Trichoptera. In eutrophic lakes  
383 annual averages of macrozoobenthos biomass can reach up to 650 g fw per m<sup>2</sup> in the  
384 profundal zone (Brinkhurst 1974). In such ecosystems the biomass of Chironomidae  
385 usually contributes from 30 to more than 100 g fw per m<sup>2</sup> (Janeček 1985, 1987).

386 Beside active filterers also predators were found such as the free-living flatworm  
387 *Dugesia tigrina* and the leech *Helobdella stagnalis*. Among the Chironomidae a  
388 number of carnivorous (or at least partially carnivorous) species have been observed:  
389 *Ablabesmyia longistyla*, *A. monilis*, *Procladius* spp., *Cryptochironomus* spp.,  
390 *Tanytus kraatzi* and *T. punctipennis*. Some species that are commonly known for  
391 running waters have been observed in 1999 in Alte Donau, such as *Propappus volki*  
392 belonging to the Oligochaeta (this oligochaet species occurred also in the Danube  
393 River, see Moog 2002; Moog and Hartmann 2017), *Hydropsyche contubernalis* of  
394 the Trichoptera and *Polypedilum convictum* of the Chironomidae. Most species of

the Chironomidae, but also of the Oligochaeta and Trichoptera, were living on the open bottom areas and thus became quantitatively important whereas phytophilic species (such as for example *Ophidonais serpentina* belonging to the Naididae) did not contribute significantly to abundances and biomass within the macrozoobenthic community. In case of the chironomids this result is also supported by the percentages of pupal exuviae: Here the most phytophilic species did not even reach 1% of the total drift. The dominance of macrozoobenthos species that are living in the sediment in association with rarely found phytolitic species indicates that the sediment surface had recovered as valuable habitat for the benthic fauna while macrophytes were still missing during this period in Alte Donau.

The compositional changes in the chironomids shifted toward species that were primarily living in gravel and sandy sediment. These changes correspond to a slight decrease of the trophic index indicating eutrophic-mesotrophic conditions (Fig. 14.5). The overall species composition displayed in the NMS-ordination plot shows that the chironomid community structure tends to be less different from mesotrophic conditions than in year 1995 (Fig. 14.6, along the first NMS-axis points for 1997–1999 are less distant to points of the mesotrophic year 1987 than compared with the distance of points of mesotrophic year 1987 and eutrophic year 1995).

### 14.3.5 Years 2000 and 2003 – Period of the Re-Establishment of Macrophytes

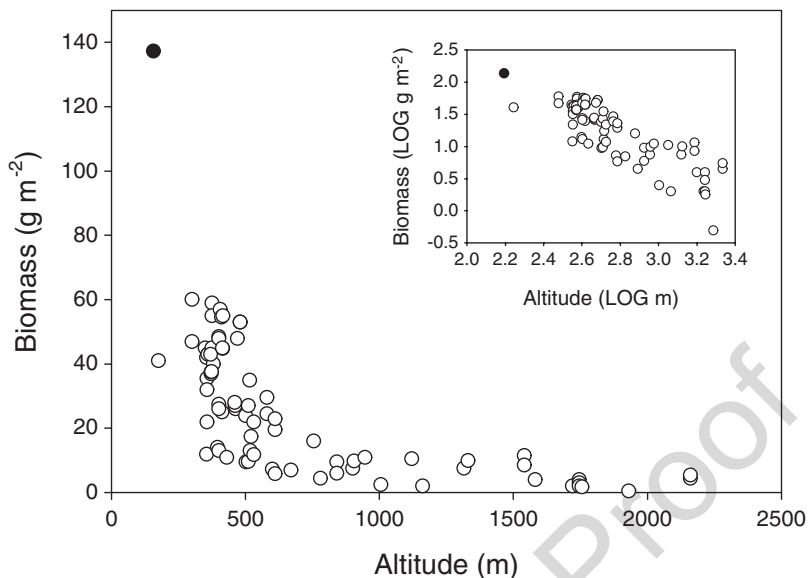
The 2 years of macrozoobenthos surveys within the period of re-establishment of macrophytes (2000–2006, Fig. 5.4 in Chap. 5) are in the beginning and middle of the 7-year period. In 2000 and 2003 the annual mean Secchi depth was 1.9 and 2.3 m, respectively. The water transparency in these years was thus similar to that in 1999 (Fig. 11.5 in Chap. 11). While the macrophyte biomass surveyed for the whole basin of Alte Donau had increased consecutively from 1996 to 1999 by 10 to almost 15 tons dry weight (Figs. 8.1 and 8.7 in Chap. 8), the biomass did not exceed 15 tons in 2000. The second year of macrozoobenthic survey, year 2003, however, is the first “macrophyte transition” year with a significant increase to 125 tons dry weight biomass of underwater vegetation. From 2004 onward the annual mean Secchi depth increased significantly from 2.8 to 3.9 m and macrophytes reached remarkable stands of 300–500 tons dry weight in Alte Donau (under mesotrophic conditions in 1987 macrophytes reached 721 tons dry weight, Chap. 8). Macrozoobenthos surveys, however, are only described for 2000 and 2003 and, thus, relate to an environment of still low water transparency and a moderately enhanced macrophyte biomass in 2003. The abundance was much lower than in the years before. In 2000 and 2003 about a half of the oligochaets and a third of the chironomids of the peak abundance in 1999 could be reached (Fig. 14.4). Nevertheless, the biomass of oligochaets was still high while the biomass of chironomids was considerably low. The oligochaets dominated the benthic community most frequently when comparing the

436 biomass of the main taxonomic affiliation groups (Fig. 14.3c) even though the total  
437 macrozoobenthos biomass was relatively low when compared with previous periods  
438 of restoration (Fig. 14.3a, b). More subtle differences in compositional shifts were  
439 found when considering single macrozoobenthic species. *Stempellinella minor* was  
440 a common chironomid species in the years of chemical phosphate precipitation  
441 inhabiting the littoral sediment areas without submerged vegetation. Their abun-  
442 dance declined slowly in years of stepwise re-establishment of macrophytes. Some  
443 chironomids that are commonly found at less nutrient rich habitats, such as  
444 *Cladotanytarsus nigrovittatus* (trophic index 3.6), for example, became more abun-  
445 dant in Alte Donau while *C. mancus* (trophic index 4.0) declined. Large profundal  
446 living Chironomus species such as *C. balatonicus* and *C. plumosus* that are com-  
447 monly found under eutrophic conditions and that are expected to survive even in  
448 anoxic periods became less often observed. They reached lower abundances in 2000  
449 and 2003 than compared with the restoration period in Alte Donau before. The pro-  
450 fundal chironomid fauna typically associated with sustained mesotrophic condi-  
451 tions (e.g., *Tanytarsus bathophilus*, *T. gregarius* and *T. inaequalis*) were,  
452 nevertheless, quantitatively still of minor importance. When assessing the whole  
453 chironomid community, the median values of the trophic index for 2000 and 2003  
454 tended to decrease slightly (Fig. 14.5) indicating a slow development toward  
455 eutrophic-mesotrophic conditions. In addition, the chironomid species composition  
456 did not differ considerably from those in 1997–1999 (see NMS-ordination plot in  
457 Fig. 14.6) and thus indicates again that the chironomid community structure is still  
458 very different from observations in mesotrophic 1987.

459 In patchy sediment areas where the bottom structure clearly indicated the  
460 approved iron chloride treatment to reduce phosphate availability by precipitation,  
461 a community of active filter feeders was reaching high biomasses in the two survey  
462 years. *Dreissena polymorpha* that was in particular found in 2000 and *Pisidium niti-*  
463 *dum* and Pea mussels that were commonly observed in 2003 thus seem to be the  
464 most persisting active filter feeders which can still occur under more stable condi-  
465 tions after the restoration period has been passed.

### 466 **14.3.6 Comparison of Macrozoobenthos Biomass** 467 **across Habitats**

468 The abundance and biomass of benthic fauna varied among large taxonomic affilia-  
469 tions corresponding to the environmental disturbance by restoration measures and  
470 different trophic states in Alte Donau. It must be stated here that the relatively low  
471 trophic index of 1987 (3.46) representing mesotrophic conditions (2.50–3.49,  
472 Fittkau 1992) was never reached again during the following years of the investiga-  
473 tion. The habitat biomass of macrozoobenthic communities, however, can also vary  
474 across altitudes (Jungwirth et al. 1980), (Fig. 14.7). The biomass of macrozooben-  
475 thos increases exponentially when following the aquatic habitats from the source at  
476 high altitude to the river mouth at low altitudes in Austria. Among Austrian water



**Fig. 14.7** Biomass of invertebrates sampled from benthic habitats across altitudes. Inset displays the same data but on double logarithmic scale. The black dot refers to the median biomass of Alte Donau (1995–2003). The white dots are from Dückelmann 2001 in Jungwirth et al. 1980, 2003

bodies, Alte Donau represents an ecosystem at particular low altitude that is located in the lowland close to the Danube river flood plain in Vienna. The enhanced biomass for Alte Donau (137 g per m<sup>2</sup>) thus corresponds well to the exponential increase of macrozoobenthic biomass at low altitude habitats (see also the correspondence of the data point for Alte Donau in the log-log plot in the inset of Fig. 14.7).

## 14.4 Discussion

### 14.4.1 Species Inventory of Alte Donau

The knowledge on the benthic invertebrate fauna of the Austrian Danube section has shown a remarkable input in the last 15 years of the twentieth century. Nine years after Russev (1985) who reported 167 species, Humpesch and Moog (1994) observed 897 species of the macrozoobenthos for the River Danube in Austria. Of these, 306 species were restricted to the free-flowing main river channel, 354 species to the backwaters of impoundments and 683 to the backwaters of the riverside forests. A couple of years before the European Water Framework Directive was put into practice, the upcoming European environmental water policy stimulated a number of Danube and large river studies with a focus on environmental status assessment and discussions about mitigation measures of flood protection,

494 navigation and hydropower use effects. As a result, Moog et al. (1995) published a  
495 list with 1142 invertebrates species in the Austrian Danube followed by a total of  
496 1289 species 5 years later (Moog et al. 2000).

497 The study on the benthic fauna of Alte Donau contributes valuably to the knowl-  
498 edge of the biodiversity of the Austrian Danube system. A total of 330 benthic  
499 invertebrate taxa were recorded by Löffler et al. (1988) and during the current inver-  
500 tebrate surveys from 1995 to 2003. This is a comparably high number if one takes  
501 into consideration, that the entire water body of Alte Donau is located in the urban  
502 area close to the centre of Vienna. The importance of Alte Donau as an urban diver-  
503 sity hot spot is also confirmed by the fact that from the whole floodplain area around  
504 Vienna (downstream Greifenstein, river-kilometre 1940, to Vienna-Freudenau,  
505 river-kilometre 1920) a total of 511 species and 625 species have been reported in  
506 1995 and 2000 respectively (Moog et al. 1995, 2000; Moog and Hartmann 2017).  
507 This means that the comparatively small water body Alte Donau offers a habitat for  
508 65% and 53% respectively of the benthic invertebrate species that are known from  
509 the floodplains around Vienna.

#### 510 **14.4.2 Impact of Habitat Disturbance on Benthic Community** 511 ***in Alte Donau***

512 Benthic invertebrates are the most preferred biomonitoring organisms studying  
513 stressors and drivers in freshwaters from temperate to subtropical and tropical zone  
514 (e.g., McLachlan 1974; Wolfram et al. 1999; Stendera et al. 2012; Mengistou 2016;  
515 Cai et al. 2017; Moog et al. 2018). Despite their high value as bioindicator in natural  
516 habitats (e.g., for chironomids in Fittkau 1992 and Orendt 1993) and their metric-  
517 based differences in benthic invertebrate communities between restored and non-  
518 restored sites (Sundermann et al. 2011), several studies emphasise the difficulties of  
519 tracking the success of restoration by retarded re-colonization of benthic inverte-  
520 brates (Langford et al. 2009; Stendera et al. 2012). It is rather argued that the link-  
521 age between habitat change and structural change in the invertebrate community is  
522 less pronounced than assumed by restoration practitioners (Jähnig et al. 2010;  
523 Sundermann et al. 2011). Our results of benthic invertebrate biomonitoring surveys  
524 are in accordance with these studies as the improvement of water quality indicated  
525 by these organisms is much slower than expected by other restoration indicators. In  
526 case of Alte Donau, however, the delay in the recovery of the benthic community  
527 might be mainly due to coating of biota and sediment surface by chemical precipi-  
528 tants, on the one hand, and a too abrupt habitat shift by drastic nutrient reduction on  
529 the other. In the year 2004, when periods of chemical phosphate precipitation  
530 (1995–1996) and the moderate recovery of submerged macrophyte stands have  
531 been passed, the chironomid trophy index indicated only a slight recovery of the  
532 species composition compared with the mesotrophic conditions in 1987 in Alte  
533 Donau. Other organisms than benthic invertebrates, such as phytoplankton, that are  
534 commonly used to assess water quality, indicate the “success” of a restoration more



rapidly. Already from year 2001 onward, the chlorophyll-a concentration revealed low values indicating a decrease of phytoplankton biomass under mesotrophic conditions in Alte Donau (Fig. 5.5 in Chap. 5, see period 3 in Fig. 9.10 and 9.11 in Chap. 9). An assessment by phytoplankton relies on species that have a short generation time ranging from hours to few days. Only phytoplankton taxa living in a more persistent environment in deep chlorophyll layers in deep lakes (Teubner et al. 2003b) are known to have a longer life span of up to 5–7 days (e.g., Gervais 1998, Zotina et al. 2003). The rapid decline of phosphorus in the water column due to phosphorus flocculation in Alte Donau thus immediately suppressed the growth of short-lived phytoplankton and was associated with significant compositional shifts from the dominance of cyanobacteria to mainly eukaryotic algae (Teubner et al. 2003a). Different from these planktonic primary producers, all other planktonic organisms such as heterotrophic bacteria, protozoans and metazoans, responded differently and also not necessarily coherently to the shortage of the total phosphorus pool (Teubner et al. 2003a). Unlike these planktonic assemblages the benthic invertebrates are taxonomically and ecologically a very heterogeneous group. On the one side, they are comprised of species that may live for only a few weeks to months as part of their life as larvae (e.g. chironomids larvae in warm bodies). On the other side, this group also includes species with a life span of five to ten or even much more years (for tubifex see e.g., Jónasson and Thorhauge 1972, for Bivalvia Cummings and Graf 2009). In view of an ecological perspective the habitat structure of benthic species is much more complex than of planktonic organisms and, thus, benthic invertebrates were affected in different ways by the restoration measures in Alte Donau. Taking into account this ecologically heterogeneity, the re-settlement of benthic invertebrates after the Riplox-treatment toward species that are associated with mesotrophic conditions might have been driven by three aspects:

- Suppression by **the initially abrupt and further lasting shortage** of planktonic food that was primarily achieved by the growth control of phytoplankton under reduced phosphorus availability.
- Vulnerability to the **short-time habitat destruction** and toxicity from the chemical sediment treatment and the settlement of the phosphorus precipitate on sediment surface aimed at reducing internal phosphorus load and thus to reduce the total phosphorus pool in the water column and.
- Colonization of the new habitats by the **long-term re-settlement of macrophytes** concomitantly with the increasing water transparency.

The impact of these three aspects of habitat disturbance by Riplox-treatment 1995/96 and other restoration measures on benthic invertebrates acted concurrently and cannot be detangled by analysing snap shot surveys during 7 years of observations in Alte Donau. As submerged macrophyte vegetation was sparse, most invertebrates were found in the sediment in Alte Donau. The majority of these species observed during the eutrophication and Riplox-treatment were not able to live attached to submerged macrophytes as an alternative. The bottom sediment was thus the main habitat for species of the benthic community in Alte Donau before macrophytes were successfully re-establishment in Alte Donau in year 2003 onwards (Chap. 8).

580 It is generally agreed that anthropogenically generated fine sediment deposition  
581 by terrestrial degradation, eutrophication or restoration (e.g., Naden et al. 2016) can  
582 rapidly change the sediment's habitat structure and thus impact the benthic inverte-  
583 brates in manifold ways (Wood and Armitage 1997; Gundacker 2000; Jones et al.  
584 2012; Schröder et al. 2013; Leitner et al. 2015; Murphy et al. 2015; Graf et al. 2016;  
585 Hauer et al. 2018). Such rapid fine sediment settlement alters not only the sediment  
586 architecture due to the small grain size (clogging of sediment and embeddedness of  
587 larger grains) but also the associated sediment properties such as hydrological  
588 exchange at the water-sediment interface, the oxygen content and related redox-  
589 chemical characteristics. In Alte Donau, the quality of fine sediments has been  
590 changed. During the eutrophication period, the fine sediment was built from subse-  
591 quent sequestering of huge biomass of planktonic cyanobacteria, algae and other  
592 organisms and contained chemical precipitates due to the Riplox-treatment (Ripl  
593 1976) in 1995/1996. The total biomass of benthic invertebrates and also the biomass  
594 and abundances of individual groups such as the chironomids and the oligochaets  
595 were particularly low during the chemical treatment with iron chloride, slaked lime  
596 and calcium nitrate in Alte Donau. The rapid and sustained oxidization of the sedi-  
597 ment by nitrate that aimed at phosphate precipitation in the water column and a  
598 suppressed P-release from sediment, seem to enhance microbial activity (e.g.,  
599 Wauer et al. 2005) on the one hand but is also described to be toxic for benthic  
600 invertebrates on the other hand. According to mesocosm experiments by Sueitt et al.  
601 (2015) that were designed for assessing the ecological risk of the calcium nitrate  
602 exposure to benthic invertebrates, the abundance of benthic community mainly  
603 composed by oligochaetes and chironomids was significantly lowered after 25 days  
604 of incubation. During their experiments the abundance of 900 oligochaets was  
605 reduced by 87%, those of about 50 chironomids by 20%. The relative importance of  
606 chironomids over oligochaets at generally low biomass of benthic invertebrates dur-  
607 ing both years of the Riplox-treatment in Alte Donau thus might rather mirror the  
608 losses of oligochaets by nitrate exposure than the re-colonization by 'new' chirono-  
609 mid species in the sediment. It is worth mentioning that oligochaetes are known to  
610 be particularly hypoxia resistant (*Tubifex* species are surviving 10–11 weeks in the  
611 hypoxic sediment under ice in winter and 2 weeks in hypoxic sediments at around  
612 16 °C during stratification in summer, see review by Grieshaber et al. 1993), and  
613 thus seem to be especially vulnerable to superficial over-saturation of oxygen by  
614 access of nitrate in the sediment. Remediation experiments by Janke et al. (2011)  
615 and Sueitt et al. (2015) that were designed to tackle the time schedule of re-coloni-  
616 zation by benthic invertebrates after sediment treatment with nitrate confirm labora-  
617 tory experiments by Ripl (1976) 'that the restored sediment can support chironomids,  
618 tubificids and other animals'. After the decline of the population densities of benthic  
619 invertebrates due to the disturbance of benthic sediments by chemical or mechanical  
620 treatment (e.g., dredging declines 82% of benthic biomass, Moog et al., 2015), chi-  
621 ronomids and oligochaets are commonly the primary or early secondary colonizers.  
622 The re-settlement of invertebrate animals after restoration is strongly supported by  
623 invertebrates from the surrounding environment (Langford et al. 2009; Sundermann  
624 et al. 2011). According to Graf et al. (2015) the Diptera with 174 taxa and the

oligochaets with 53 taxa are the most heterogeneous groups within the benthic invertebrate community in the Danube River (see also Moog et al. 1995, 2000 and Sect. 14.4.1). Although it can be assumed that chironomid species that inhabit mesotrophic freshwaters in the nearby Danube River floodplain would have a major contribution to the recolonization, the species composition of chironomids did not significantly alter from 1995 to 2003 in Alte Donau. A concurrent increase of the abundance of phytophilic chironomids and the re-settlement of submerged macrophytes, however, was observed during this period and supports the importance of macrophytes as habitat for benthic invertebrates (Cyr and Downing 1988; Cheruvellil et al. 2002; Kirby and Ringler 2015). The invertebrate survey ended in 2003 before a more stabilized macrophyte biomass has been developed from 2004 onward in Alte Donau. While the macrophyte biomass was still relatively low in 2003 (17% of the biomass in 1987) about 50% macrophyte biomass of the mesotrophic reference year 1987 has been observed from 2004 onward (Figs. 8.7 and 8.11 in Chap. 8).

The invertebrate activity by feeding and bioturbation mediates detritus processing and subsequently affects the properties of the sediment habitat (McCall and Fischer 1980; Mermillod-Blondin et al. 2002; Nogaro et al. 2006, 2009, Hunting et al. 2012). The shift from the predominance of chironomids during both years of the Riplox-treatment (1995/96) to a predominance of oligochaets (1997–1999 and 2000, 2003) might have altered the sediment structure as the mode of bioturbation by these two invertebrate groups affects the water-sediment exchange in aquatic ecosystems differently. While the tubificids are described as upward conveyors feeding on deeper sediment but ejecting the faecal pellets at the sediment-water interface, the chironomids are rather known as biodiffusors living in U-shaped tubes at the near surface layer of the sediment (e.g., McCall and Fischer 1980; Mermillod-Blondin et al. 2002; Nogaro et al. 2006, 2009). The tubificid worms are thus seen as the more efficient benthic animals for reducing interstitial clogging when compared with chironomids.

In Alte Donau, mussels occurred during all three phases from the chemical treatment onward, which might relate to an alternate environmental adjustment of single species. According to Gundacker (2000), fine sediment habitats are preferred by *Anodonta* sp., while *Unio pictorum* is rather found in patchy areas of low fine sediment deposition in the Danube River. Both bivalve species were also observed during the invertebrate surveys in Alte Donau. These efficient filtrating collectors seemed to cope well with both fine sediment types, i.e. the particles sequestered from planktonic biota and those deposited by chemical treatment.

Despite the variation of benthic invertebrates between years of different trophic state and restoration measure, the relatively high biomass and the large number of species discussed above, characterise Alte Donau as lowland habitat. The exponential biomass increase of macrozoobenthos from high to low attitude habitats might be a function of a number of indirect local effects (e.g., nutrient enrichment in the lowland ecosystems, lower flow velocity might favour large-bodied benthic animals and stable potamal habitat conditions and thus might also protect the animals against washing out during floods) superimposed by global impacts (e.g. decreasing atmospheric pressure and less exposure to UV radiation across high to low attitude habitats).

670 The different effects modifying macrozoobenthic biomass and community structure  
671 thus need to be disentangled when further assessing Alte Donau compared with  
672 other habitats across altitudes. An increase of both, the invertebrate biomass and the  
673 number of benthic invertebrate orders and families from high to low altitude habi-  
674 tats, however, are commonly observed in stream ecology and are mainly discussed  
675 as direct impact of temperature and associated habitat characteristics (e.g. heavy  
676 metal concentration, 'stream hydraulics') (e.g., Clements and Kiffney 1995;  
677 Jacobsen et al. 1997; Jungwirth et al. 2003; Schmutz and Moog 2018).

## 678 14.5 Conclusion

679 The macrozoobenthos biomonitoring surveys covered the year 1987 before eutro-  
680 phication and years of restoration (including the 2 years of chemical treatment of  
681 phosphate precipitation) and an early stage of the period of re-establishing the sub-  
682 merged vegetation in the oxbow lake Alte Donau. Despite the rapid decrease of  
683 phytoplankton biomass associated with an increase of water transparency and a  
684 subsequent growth of macrophytes along restoration measures, the chironomid  
685 assemblage did not clearly show a species shift towards a mesotrophic habitat. A  
686 main reason can be seen in the still relatively low macrophyte biomass during the  
687 last recent invertebrate survey in 2004, when only about 50% of the macrophyte  
688 biomass was recorded compared to the mesotrophic situation in 1987. Thus in 2004  
689 many invertebrates living in the sediment have been found while phytophilic spe-  
690 cies, which typically live attached to the submerged vegetation, were still less com-  
691 mon. It can be expected, however, that with an increase of submerged water plants  
692 in Alte Donau also more clean-water colonizers as found in 1987 will further reset-  
693 tle in Alte Donau. Despite the wax and wane of benthic invertebrates described  
694 during the 8 years of observation, the relatively high long-term average of inverte-  
695 brate biomass characterises Alte Donau well as lowland environment across low- to  
696 high altitude habitats.

697 **Acknowledgments** During the 8 years of research many colleagues have contributed to the work.  
698 We want to thank Hasko Nesemann (Turbellaria, Hirudinea, Mollusca and Crustacea), Dr. Michal  
699 Horšák (some Mollusca), Dr. Elisabeth Haberlehner (Mollusca: 1987), Dr. Ferdinand Sporka  
700 (Oligochaeta), Dr. Christa Thurnherr (Hydracarina: 1987) and Dr. Wolfram Graf (Trichoptera) for  
701 their contribution to determining the species. The following colleagues who have not only sup-  
702 ported in taxonomy but also contributed evaluating the results of the survey 1987 we also want to  
703 thank: Dr. Elisabeth Bauer (benthic fauna generally), Dr. B. Grasl (benthic), Dr. Alexander  
704 Schneider (phytal faunistics), Univ.-Prof. Dr. Johann Waringer (benthic- and phytal faunistics) and  
705 Dr. Harald Wintersberger (phytal faunistics). We further thank for field work Dipl. Ing. Reinhard  
706 Wimmer and Mag. Gabriele Weinzettl. Many thanks also to the colleagues contributing in the lab  
707 work: Dipl.-Ing. Dr. Gabriele Bannhofer, Dipl.-Ing. Karin Egger, Mag. Peter Hecher, cand. rer. nat.  
708 Verena Hirzinger, Dipl.-Ing. Mik Hochfellner, Dipl.-Ing. Catherine Hörl, Isabella Leeb, Univ.-  
709 Doz. Dr. Seval Muminović, Dipl.-Ing. Andreas Römer, cand. phil. Martin Seebacher and Dipl.-Ing.  
710 Susanne Steiner. Finally, we express our thanks for collecting pupal exuviae and identifying  
711 Ephemeroptera: Agnes und Lisa Beier, Dipl.-Ing. Rosemarie Forster, Mag. Thomas Geretschlager,  
712 Richard Petrik and Mirjam Suchomel; Dipl.-Ing. Dr. Astrid Schmidt-Kloiber.

## References

713

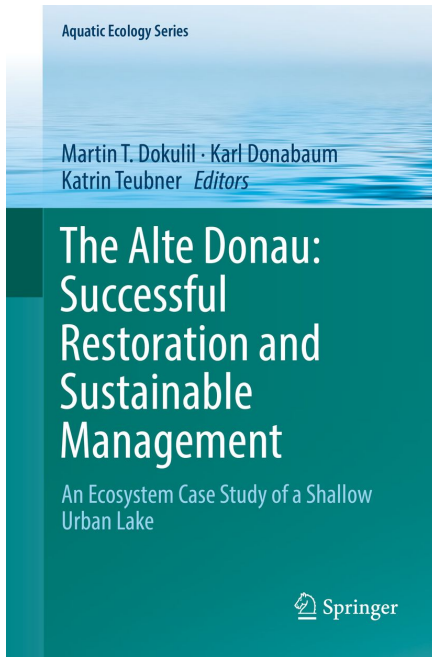
- Bauer E, Waringer J (1987) Benthofauna (pp 179–184). In: Löffler H (ed) Limnologische Projektstudie – Ökosystem Alte Donau. Scientific report, 272 pp 714  
715
- Blenckner T, Adrian R, Livingstone DM, Jennings E, Weyhenmeyer GA, George DG, Jankowski T, Järvinen M, Aonghusa CN, Nöges T, Straile D, Teubner K (2007) Large-scale climatic signatures in lakes across Europe: a meta-analysis. *Glob Chang Biol* 13:1314–1326 716  
717  
718
- Brettum P (1989) Algen als Indikatoren der Wasserqualität in norwegischen Binnengewässern. NIVA, Trondheim 719  
720
- Brinkhurst RO (1974) The benthos of lakes. The MacMillan Press Ltd, London/Basingstoke 190 pp 721
- Cai Y, Zhang Y, Wu Z, Chen Y, Xu J, Gong Z (2017) Composition, diversity, and environmental correlates of benthic macroinvertebrate communities in the five largest freshwater lakes of China. *Hydrobiologia* 788(1):85–98 722  
723  
724
- Cheruvilil KS, Soranno PA, Madsen JD, Roberson MJ (2002) Plant architecture and epiphytic macroinvertebrate communities: the role of an exotic dissected macrophyte. *J N Am Benthol Soc* 21(2):261–277 725  
726  
727
- Clements WH, Kiffney PM (1995) The influence of elevation on benthic community responses to heavy metals in Rocky Mountain streams. *Can J Fish Aquat Sci* 52(9):1966–1977 728  
729
- Cummings KS, Graf DL (2009) Mollusca: Bivalvia. In: Thorp JH, Covich AP (eds) Ecology and classification of North American freshwater invertebrates. Academic, New York, pp 309–384 730  
731
- Cyr H, Downing JA (1988) The abundance of phytophilous invertebrates on different species of submerged macrophytes. *Freshw Biol* 20(3):365–374 732  
733
- Dokulil M, Teubner K, Donabaum K (2010) Fließende und stehende Abkömmlinge des Donaustroms: Die Alte Donau. In: Vom Agnesbründl zum Donaustrom: Wasser in der Stadt; Ökosystem Stadt – Die Naturgeschichte Wiens. (Hg. F Ehrendorfer & R Berger), 2. Band, Böhlau Verlag 734  
735  
736  
737
- Fittkau EJ (ed) (1992) (Chironomidae: REIFF, N., RISS, H.W. und ORENDT, C.) Biologische Trophieindikation im Litoral von Seen. Bayerisches Landesamt für Wasserwirtschaft, Informationsberichte, Heft 7/92:184 pp 738  
739
- Gervais F (1998) Ecology of cryptophytes coexisting near freshwater chemocline. *Freshw Biol* 39(1):61–78 740  
741  
742
- Graf W, Leitner P, Pletterbauer F (2015) Short overview on the benthic macroinvertebrate fauna of the Danube River. In: Liska I (ed) The Danube river basin. Springer, Berlin Heidelberg, pp 287–315 743  
744  
745
- Graf W, Leitner P, Hanetseder I, Ittner LD, Dossi F, Hauer C (2016) Ecological degradation of a meandering river by local channelization effects: a case study in an Austrian lowland river. *Hydrobiologia* 772(1):145–160 746  
747  
748
- Grieshaber MK, Hardewig I, Kreutzer U, Pörtner HO (1993) Physiological and metabolic responses to hypoxia in invertebrates. *Rev Physiol Biochem Pharmacol* 125:43–147 749  
750
- Gundacker C (2000) Comparison of heavy metal bioaccumulation in freshwater molluscs of urban river habitats in Vienna. *Environ Pollut* 110(1):61–71 751  
752
- Haberlehner E (1986) Mollusken. In, H. Löffler, Limnologische Erhebungen im Bereich der geplanten Staustufe Wien. Neue Donau, Alte Donau, Ölhafen, Donau-Oder-Kanal (Unterer Abschnitt), Dchant-Lacke Und Panozza-Lacke. – S. 136-138, Endbericht Im Auftrag der MA 18: Wien 753  
754  
755  
756
- Haberlehner E (1987) Mollusken (pp 138–147). In: Löffler H (ed) Limnologische Projektstudie – Ökosystem Alte Donau. Scientific report, 272 pp 757  
758
- Hauer C, Leitner P, Unfer G, Pulg U, Habersack H, Graf W (2018) The role of sediment and sediment dynamics in the aquatic environment. In: Schmutz S, Sendzimir J (eds) Riverine ecosystem management, Aquatic ecology series, vol 8. Springer, Cham 759  
760  
761
- Henderson PA (2003) Practical methods in ecology. Blackwell Science Ltd:163 762
- Hofmann G (1994) Aufwuchs-Diatomeen in Seen und ihre Eignung als Indikatoren der Trophie. *Bibl Diatomol* 30:241 763  
764

- 765 Humpesch UH, Moog O (1994) Flora und Fauna der österreichischen Donau. *Limnologie aktuell*  
766 2:81–107
- 767 Hunting ER, Whatley MH, van der Geest HG, Mulder C, Kraak MHS, Breure AM, Admiraal W  
768 (2012) Invertebrate footprints on detritus processing, bacterial community structure, and spa-  
769 tiotemporal redox profiles. *Freshwater Science* 31(3):724–732
- 770 Jacobsen D, Schultz R, Encalada A (1997) Structure and diversity of stream invertebrate assem-  
771 blages: the influence of temperature with altitude and latitude. *Freshw Biol* 38:247–261
- 772 Jähnig SC, Brabec K, Buffagni A, Erba S, Lorenz AW, Ofenböck T, Verdonschot PFM, Hering D  
773 (2010) A comparative analysis of restoration measures and their effects on hydromorphology  
774 and benthic invertebrates in 26 central and southern European rivers. *J Appl Ecol* 47(3):671–680
- 775 Janeček B (1985) Beiträge zur Faunistik und Ökologie der Chironomidae (Diptera) des  
776 Gebhartsteiches, eines vom Menschen mäßig beeinflussten Karpfengewässers im nordwestli-  
777 chen Waldviertel (Niederösterreich). Phd thesis, Wien, 370 pp
- 778 Janeček B (1987) Chironomidae. In: Löffler H (ed, 1988) *Limnologische Projektstudie –*  
779 *Ökosystem Alte Donau*, Endbericht, 272 pp
- 780 Janeček B (1995) *Tanytarsus niger* ANDERSEN (Diptera: Chironomidae) and the chironomid  
781 community in Gebhartsteich, a carp pond in Northern Austria. In: Cranston P (ed) *Chironomids.*  
782 *From Genes to Ecosystems*. CSIRO Australia, pp 281–296
- 783 Janeček B (2000) Changes of chironomid communities during iron chloride treatment of Alte  
784 Donau, the largest stagnant water of Vienna (Austria). In: Hoffrichter O (ed.) *Late 20th centu-*  
785 *ry research on Chironomidae: an Anthology from the 13th international symposium on*  
786 *Chironomidae*, Shaker publisher, Aachen 2000: 449–461
- 787 Janeček B (2005) Moosthierchen und Zuckmücken. *Denisia* 16, Neue Serie 28:305–324
- 788 Jnke H, Yamada T, Beraldo DAS, Botta CMR, Nascimento MRL, Mozeto AA (2011) Assessment  
789 of the acute toxicity of eutrophic sediments after the addition of calcium nitrate (Ibirité reser-  
790 voir, Minas Gerais-SE Brazil): initial laboratory experiments. *Braz J Biol* 71(4):903–914
- 791 Jónasson PM, Thorhauge F (1972) Life cycle of *Potamothrix hammoniensis* (Tubificidae) in the  
792 profundal of a eutrophic lake. *Oikos* 23:151–158
- 793 Jones JI, Murphy JF, Collins AL, Sear DA, Naden PS, Armitage, PD (2012) The impact of fine  
794 sediment on Macro-Invertebrates. *River Res Appl* 28(8):1055–1071
- 795 Jungwirth M, Moog O, Winkler H (1980) Vergleichende Fischbestandsuntersuchungen an elf  
796 niederösterreichischen Fließgewässerstrecken.- Österr. Fischereigesellschaft; Festschrift  
797 1880–1980:81–104
- 798 Jungwirth M, Haidvogel G, Moog O, Muhar S, Schmutz S (2003) *Angewandte Fischökologie an*  
799 *Fliessgewässern*. UTB-Facultas, 547 pp ISBN 3-8252-2113
- 800 Kajak Z, Dusoge K, Prejs A (1968) Application of the flotation technique to assessment of absolute  
801 numbers of benthos. *Ekologia Polska – Seria a*, To XVI, Warszawa, 29607-62Q
- 802 Kalugina NS (1975) A key to larvae of the genus *Glyptotendipes* (Diptera, Chironomidae) in water  
803 bodies of the Moscow district. *Zoologicheskii zhurnal* 54: 1830–1837 (in Russian, Janeček B  
804 translated to German (1981, unpublished)
- 805 Karr JR (1991) Biological integrity: a long-neglected aspect of water resource management. *Ecol*  
806 *Appl* 1(1):66–84
- 807 Kirby LJ, Ringer NH (2015) Associations of epiphytic macroinvertebrates within four assemblages  
808 of submerged aquatic vegetation in a recovering urban lake. *Northeast Nat* 22(4):672–689
- 809 Krienitz L, Krienitz D, Dadheech PK, Hübener T, Kotut K, Luo W, Teubner K, Versfeld WD  
810 (2016) Food algae for lesser flamingos: a stocktaking. *Hydrobiologia* 775(1):21–50
- 811 Kruskal JB (1964) Multidimensional scaling by optimizing goodness of fit to a non-metric hypoth-  
812 esis. *Psychometrika* 29:1–27
- 813 Langford TEL, Shaw PJ, Ferguson AJD, Howard SR (2009) Long-term recovery of macroinver-  
814 tebrate biota in grossly polluted streams: re-colonisation as a constraint to ecological quality.  
815 *Ecol Indic* 9(6):1064–1077
- 816 Learner MA, Lochhead G, Hughes BD (1978) A review of the biology of British Naididae  
817 (Oligochaeta) with emphasis on the lotic environment. *Freshw Biol* 8(4):357–375

- Leitner P, Hauer C, Ofenböck T, Pletterbauer F, Schmidt-Kloiber A, Graf W (2015) Fine sediment deposition affects biodiversity and density of benthic macroinvertebrates: a case study in the freshwater pearl mussel river Waldaist (Upper Austria). *Limnol-Ecol Manage Inland Waters* 50:54–57 818–821
- Löffler H et al (1988) *Alte Donau – Projektstudie im Auftrag der Wasserstraßendirektion*; Wien: 272 pp 822–823
- McCall PL, Fisher JB (1980) Effects of tubificid oligochaetes on physical and chemical properties of Lake Erie sediments. In: Brinkhurst RO, Cook DG (eds) *Aquatic oligochaete biology*. Springer/Plenum, New York, pp 253–317 824–826
- McLachlan AJ (1974) Development of some lake ecosystems in tropical Africa, with special reference to the invertebrates. *Biol Rev* 49(3):365–397 827–828
- Mengistou S (2016) Invertebrates of East African soda lakes. In: Schagerl M (ed) *Soda Lakes of East Africa*. Springer Publishers, Cham, pp 205–226 829–830
- Mermillod-Blondin F, Gérino M, Châtelliers MC, Degrange V (2002) Functional diversity among 3 detritivorous hyporheic invertebrates: an experimental study in microcosms. *J N Am Benthol Soc* 21(1):132–149 831–833
- Merritt RW, Cummins KW (1996) *An introduction to the aquatic insects of North America*. Kendall Hunt, Dubuque 834–835
- Moog O (ed) (2002) *Fauna Aquatica Austriaca. A comprehensive species Inventory of Austrian Aquatic Organisms with ecological notes. Edition 2002–Wasserwirtschaftskataster, Bundesministerium für Land- und Forstwirtschaft, Umwelt und Wasserwirtschaft, Vienna* 836–838
- Moog O, Hartmann A (eds) (2017) *Fauna Aquatica Austriaca, 3rd edn. A comprehensive species inventory of Austrian aquatic organisms with ecological notes; BMLFUW, Wien. ISBN: 978-3-85174-074-5* 839–841
- Moog O, Brunner S, Humpesch H, Schmidt-Kloiber A (2000) The distribution of benthic invertebrates along the Austrian stretch of the river Danube and its relevance as an indicator of zoogeographical and water quality patterns – part 2. *Large Rivers* 11(4), *Archiv für Hydrobiologie Supplement* 115/4:473–509 842–845
- Moog O, Chovanec A (2000) Assessing the ecological integrity of rivers: walking the line among ecological, political and administrative interests. *Hydrobiologia* 422:99–109 846–847
- Moog O, Humpesch UH, Konar M (1995) The distribution of benthic invertebrates along the Austrian stretch of the river Danube and its relevance as an indicator of zoogeographic and water quality patterns. *Archiv für Hydrobiologie Supplement* 101(2):121–213 848–850
- Moog O, Schmutz S, Schwarzwinger I (2018) Biomonitoring and bioassessment. In: Schmutz S, Sendzimir J (eds) *Riverine ecosystem management. Aquatic ecology series, vol 8*. Springer, Cham 851–853
- Moog O, Stubauer I, Haimann M, Habersack H, Leitner P (2015) Effects of harbour excavating and dredged sediment disposal on the benthic invertebrate fauna of river Danube (Austria). *Hydrobiologia*:1–12. <https://doi.org/10.1007/s10750-015-2476-x> 854–856
- Murphy JF, Jones JI, Pretty JL, Duerdoth CP, Hawczak A, Arnold A, Blackburn JH, Naden PS, Old G, Sear DA, Hornby D, Clarke RT, Collins AL (2015) Development of a biotic index using streammacroinvertebrates to assess stress from deposited fine sediment. *Freshw Biol* 60(10):2019–2036 857–860
- Naden PS, Murphy JF, Old GH, Newman J, Scarlett P, Harman M, Duerdoth CP, Hawczak A, Pretty JL, Arnold A, Laizé C, Hornby DD, Collins AL, Sear DA, Jones JI (2016) Understanding the controls on deposited fine sediment in the streams of agricultural catchments. *Sci Total Environ* 547:366–381 861–864
- Nogaro G, Mermillod-Blondin F, Francois-Carcaillet F, Gaudet JP, Lafont M, Gibert J (2006) Invertebrate bioturbation can reduce the clogging of sediment: an experimental study using infiltration sediment columns. *Freshw Biol* 51(8):1458–1473 865–867
- Nogaro G, Mermillod-Blondin F, Valett MH, François-Carcaillet F, Gaudet JP, Lafont M, Gibert J (2009) Ecosystem engineering at the sediment–water interface: bioturbation and consumer–substrate interaction. *Oecologia* 161(1):125–138 868–870

- 871 Ripl W (1976) Biochemical oxidation of polluted lake sediment with nitrate: a new lake restoration  
872 method. *Ambio* 5(3):132–135
- 873 Schmutz S, Moog O (2018) Dams: ecological impacts and management. In: Schmutz S, Sendzimir  
874 J (eds) *Riverine ecosystem management*. Aquatic ecology series, vol 8. Springer, Cham
- 875 Schneider A, Waringer J, Wintersberger H (1988) Phytal-Faunistik. In: Löffler H (ed)  
876 *Limnologische Projektstudie – Ökosystem Alte Donau*. Scientific report, 272 pp
- 877 Schröder M, Kiesel J, Schattmann A, Jähnig SC, Lorenz AW, Kramm S, Keizer-Vlek H, Rolauffs  
878 P, Graf W, Leitner P, Hering D (2013) Substratum associations of benthic invertebrates in low-  
879 land and mountain streams. *Ecol Indic* 30:178–189
- 880 Orendt C (1993) Vergleichende Untersuchungen zur Ökologie litoraler, benthischer Chironomidae  
881 und anderer Diptera (Ceratopogonidae, Chaoboridae) in Seen des nördlichen Alpenvorlandes,  
882 mit einem Beitrag zur Eignung und Verwendung von Chironomiden als Trophie-Indikatoren.  
883 Phd thesis, München, 274 pp
- 884 Rosenberg DM, Resh VH (1993) *Freshwater biomonitoring and benthic macroinvertebrates*.  
885 Chapman and Hall, New York, 488 pp
- 886 Russev B (1985) Das Zoobenthos im österreichischen Donauabschnitt unter dem Einfluß der  
887 Stauanlagen. In: Naidenow W (ed) *Die Auswirkungen der wasserbaulichen Maßnahmen und  
888 der Belastung auf das Plankton und das Benthos der Donau*, p 151 Verlag der Bulgarischen  
889 Akademie der Wissenschaften) Sofia
- 890 Stendera S, Adrian R, Bonada N, Cañedo-Argüelles M, Hugueny B, Januschke K, Pletterbauer  
891 F, Hering D (2012) Drivers and stressors of freshwater biodiversity patterns across different  
892 ecosystems and scales: a review. *Hydrobiologia* 696(1):1–28
- 893 Sueitt APE, Yamada-Ferraz TM, Oliveira AF, Botta CMR, Fadini PS, Nascimento MRL, Faria  
894 BM, Mozeto AA (2015) Ecotoxicological risks of calcium nitrate exposure to freshwater tropi-  
895 cal organisms: laboratory and field experiments. *Ecotoxicol Environ Saf* 117:155–163
- 896 Sundermann A, Antons C, Cron N, Lorenz AW, Hering D, Haase P (2011) Hydromorphological  
897 restoration of running waters: effects on benthic invertebrate assemblages. *Freshw Biol*  
898 56(8):1689–1702
- 899 Teubner K, Crosbie N, Donabaum K, Kabas W, Kirschner A, Pfister G, Salbrechter M, Dokulil  
900 MT (2003a) Enhanced phosphorus accumulation efficiency by the pelagic community at  
901 reduced phosphorus supply: a lake experiment from bacteria to metazoan zooplankton. *Limnol  
902 Oceanogr* 48 (3):1141–1149
- 903 Teubner K, Tolotti M, Greisberger S, Morscheid H, Dokulil MT, Morscheid H (2003b) Steady state  
904 phytoplankton in a deep pre-alpine lake: Species and pigments of epilimnetic versus metal-  
905 limnetic assemblages. *Hydrobiologia* 502:49–64
- 906 Wauer G, Gonsiorczyk T, Casper P, Koschel R (2005) P-immobilisation and phosphatase activities  
907 in lake sediment following treatment with nitrate and iron. *Limnol-Ecol Manage Inland Waters*  
908 35(1):102–108
- 909 Wood PJ, Armitage PD (1997) Biological effects of fine sediment in the lotic environment. *Environ  
910 Manag* 21(2):203–217
- 911 Wolfram G (1996) Distribution and production of chironomids (Diptera: Chironomidae) in a shal-  
912 low, alkaline lake (Neusiedler See, Austria). *Hydrobiologia* 318:103–115
- 913 Wolfram G, Donabaum K, Schagerl M, Kowarc VA (1999) The zoobenthic community of shallow  
914 salt pans in Austria – preliminary results on phenology and the impact of salinity on benthic  
915 invertebrates. *Hydrobiologia* 408/409:193–202
- 916 Woolsey S, Capelli F, Gonser T, Hoehn E, Hostmann M, Junker B, Paetzold A, Roulier C,  
917 Schweizer S, Tiegs SD, Tockner K, Weber C, Peter A (2007) A strategy to assess river restora-  
918 tion success. *Freshw Biol* 52(4):752–769
- 919 Zotina T, Köster O, Jüttner F (2003) Photoheterotrophy and light-dependent uptake of organic and  
920 organic nitrogenous compounds by *Planktothrix rubescens* under low irradiance. *Freshw Biol*  
921 48(10):1859–1872





1st ed. 2018, VIII, 310 p. 181 illus., 54 illus. in color.

### Printed book

Hardcover

139,99 € | £119.99 | \$169.99

<sup>[1]</sup>149,79 € (D) | 153,99 € (A) | CHF 165,50

### eBook

118,99 € | £95.50 | \$129.00

<sup>[2]</sup>118,99 € (D) | 118,99 € (A) | CHF 132,00

Available from your library or [springer.com/shop](http://springer.com/shop)

### MyCopy <sup>[3]</sup>

Printed eBook for just

€ | \$ 24.99

[springer.com/mycopy](http://springer.com/mycopy)

Martin T. Dokulil, Karl Donabaum, Katrin Teubner (Eds.)

# The Alte Donau: Successful Restoration and Sustainable Management

An Ecosystem Case Study of a Shallow Urban Lake

Series: Aquatic Ecology Series

- Provides a variety of strategies to restore and manage deteriorated recreational urban waters.
- Broadens the understanding of the importance of all trophic levels of the food web for successful rehabilitation and implementation of landscape architecture for an attractive recreational site
- Clearly demonstrates that long-term efforts are essential for sustainable recovery

Here we report on a 25-year long-term sequence of measures to return a deteriorated recreational urban lake, Alte Donau in Vienna to acceptable water quality. Metropolitan waters require focused ecosystem management plans and intensive in-lake efforts. We explored physico-chemical conditions, food web from viruses to fish and water birds, the sediments, the littoral zone and the catchment, management and urban planning, and global warming. Several restoration techniques were tested and critically evaluated. The final management plan was based on bi-stable theory. During the recovery phase, numerous surplus adjustments had to be implemented to secure sustainable achievement.

Lifelong 40% discount for authors



Order online at [springer.com](http://springer.com) / or for the Americas call (toll free) 1-800-SPRINGER / or email us at: [customerservice@springernature.com](mailto:customerservice@springernature.com). / For outside the Americas call +49 (0) 6221-345-4301 / or email us at: [customerservice@springernature.com](mailto:customerservice@springernature.com).

The first € price and the £ and \$ price are net prices, subject to local VAT. Prices indicated with [1] include VAT for books; the €(D) includes 7% for Germany, the €(A) includes 10% for Austria. Prices indicated with [2] include VAT for electronic products; 19% for Germany, 20% for Austria. All prices exclusive of carriage charges. Prices and other details are subject to change without notice. All errors and omissions excepted. [3] No discount for MyCopy.

*The following book chapter 14 might be cited as:*

Janecek B, Leitner P, Moog O, Teubner K (2018) The Effect of Restoration Measures on the Benthic Invertebrates of a Danube Backwater (Alte Donau). pp 243-274. *In*: Dokulil MT, Donabaum K, Teubner K (eds) The Alte Donau: Successful Restoration and Sustainable Management. Aquatic Ecology Series, vol 10. Springer (doi: [10.1007/978-3-319-93270-5\\_14](https://doi.org/10.1007/978-3-319-93270-5_14))

*The final publication is available at Springer via:*

[https://doi.org/10.1007/978-3-319-93270-5\\_14](https://doi.org/10.1007/978-3-319-93270-5_14)